



**COMMONWEALTH OF KENTUCKY
TRANSPORTATION CABINET**
Frankfort, Kentucky 40622
www.transportation.ky.gov/

Matthew G. Bevin
Governor

Greg Thomas
Secretary

December 2, 2016

CALL NO. 200
CONTRACT ID NO. 161059
ADDENDUM # 1

Subject: Morgan-Wolfe Counties, 121GR16D059-NHPP
Letting December 9, 2016

- (1) Revised - Plans - R2F, R2G, & R85
- (2) Revised - Note - Pages 24 of 353
- (3) Revised - Material Summary - Pages 234-242 of 353
- (4) Revised - Bid Items - Pages 345-353 of 353

Proposal revisions are available at <http://transportation.ky.gov/Construction-Procurement/>.

Plan revisions are available at <http://www.lynnimaging.com/kytransportation/>.

If you have any questions, please contact us at 502-564-3500.

Sincerely,

A handwritten signature in cursive script that reads "Rachel Mills".

Rachel Mills, P.E.
Director
Division of Construction Procurement

RM:ks
Enclosures



An Equal Opportunity Employer M/F/D

GENERAL SUMMARY

COUNTY OF	ITEM NO.	SHEET NO.
MORGAN WOLFE	10-126.70	R2F

ITEM	DESCRIPTION	UNIT	MOUNTAIN PARKWAY (WOLFE)	KY 205	KY 191	RAMP A	RAMP B	RAMP C	RAMP D	WOLFE COUNTY TOTAL	MOUNTAIN PARKWAY (MORGAN)	CR 1226	MORGAN COUNTY TOTAL	TOTAL PROJECT
1002	PERFORATED PIPE-8 IN ⑨	LF	250							250	250		250	500
1825	ISLAND CURB AND GUTTER	LF	346.7	100		220			90.3	757				757
1982	DELINEATOR FOR GUARDRAIL M/W	EACH	137			10	20	24	30	221	76		76	297
1983	DELINEATOR FOR GUARDRAIL M/Y	EACH	56			13			8	77	5		5	82
1987	DELINEATOR FOR GUARDRAIL B/W	EACH		18						18		18	18	36
2091	REMOVE PAVEMENT	SQYD	1676	2783						4459				4459
2159	TEMP DITCH	LF	3720	1271	171	963	657	1152	1049	8980	4056	1663	5719	14699
2160	CLEAN TEMP DITCH	LF	1860	636	86	482	329	576	525	4494	2028	832	2860	7354
2200	ROADWAY EXCAVATION ① ⑬	CUYD	229815	13817	617	220816	3053	6318	21666	496102	473769	119481	593249	1089352
2242	WATER ④	MGAL	1409	481	65	365	249	436	397	3402	1536	630	2166	5568
2262	FENCE-WOVEN WIRE TYPE 1	LF	11958	715						12673	16259		16259	28932
2265	REMOVE FENCE	LF	1395							1395	8060		8060	9455
2351	GUARDRAIL-STEEL W BEAM-S FACE	LF	6879.4	469.1		548.2	1242.6	1450	1725	12314.3	4300	750	5050	17364.3
2352	GUARDRAIL-STEEL W BEAM-D FACE	LF	575							575				575
2360	GUARDRAIL TERMINAL SECTION NO 1	EACH	13					1	1	15	1		1	16
2363	GUARDRAIL CONNECTOR TO BRIDGE END TYPE A	EACH	8	4		2			2	16				16
2367	GUARDRAIL END TREATMENT TYPE 1	EACH	4	1		1		1	2	9				9
2371	GUARDRAIL END TREATMENT TYPE 7	EACH										8	8	8
2373	GUARDRAIL END TREATMENT TYPE 3	EACH				1				1				1
2381	REMOVE GUARDRAIL ⑤	LF	9965.5						1607.5	11537	4929.5		4929.5	16502.5
2387	GUARDRAIL CONNECTOR TO BRIDGE END TYPE A-1	EACH	6			1			1	8				8
2391	GUARDRAIL END TREATMENT TY 4A	EACH				2				2				2
2399	EXTRA LENGTH POST	EACH									688		688	688
2429	RIGHT-OF-WAY MONUMENT TYPE 1	EACH	20	8						28	18		18	46
2432	WITNESS POST	EACH	3							3	3		3	6
2475	PLUG WATER WELL	EACH									1	1	1	1
2488	CHANNEL LINING CLASS IV ③	CUYD	7408	899		58		592	1961	10918	1289	568	1857	12774
2545	CLEARING AND GRUBBING ②	LS	1							1	1		1	1
2585	EDGE KEY	LF	22							22		18	18	40
2568	MOBILIZATION	LS	1							1	1		1	1
2569	DEMOBILIZATION	LS	1							1	1		1	1
2596	GEOTEXTILE FABRIC TYPE I	SQYD	10383	822						11205				11205
2599	GEOTEXTILE FABRIC TYPE IV ⑦	SQYD	77920	13988	1764	5103	4977	7586	6833	118171	104538		104538	222709
2610	RETAINING WALL-GABION	CUYD								49	49		49	49
2600	GEOTEXTILE FABRIC TYPE IV FOR PIPE	SQYD	2924	1817		104		73	27	4945	4527	108	4635	9580
2676	MOBILIZATION FOR MILLING AND TEXTURING	LS	1							1	1		1	1
2690	SAFELOADING	CUYD	83.8	8.7						92.5	24.8		24.8	117.3
2696	SHOULDER RUMBLE STRIPS-SAWED	LF	22494	4027		2074	2324	3324	2937	37180	34268		34268	71448
2701	TEMP SILT FENCE	LF	3720	1271	171	963	657	1152	1049	8980	4056	1663	5719	14699
2703	SILT TRAP TYPE A	EACH	78	8						86	59	12	71	157
2704	SILT TRAP TYPE B	EACH	78	8						86	59	12	71	157
2705	SILT TRAP TYPE C	EACH	78	8						86	59	12	71	157
2706	CLEAN SILT TRAP TYPE A	EACH	78	8						86	59	12	71	157
2707	CLEAN SILT TRAP TYPE B	EACH	78	8						86	59	12	71	157
2708	CLEAN SILT TRAP TYPE C	EACH	78	8						86	59	12	71	157
2726	STAKING	LS	1							1	1		1	1
2731	REMOVE STRUCTURE - KY 205 BRIDGE OVER STATE ROAD FORK	LS		1						1				1
2731	REMOVE STRUCTURE - MT PKWY BRIDGE OVER KY 205	LS	1							1				1
2731	REMOVE STRUCTURE - MT PKWY BRIDGE OVER RED RIVER	LS	1							1				1
2731	REMOVE STRUCTURE - PARCEL 26 (WELL HOUSE)	LS										1	1	1
2929	CRASH CUSHION TYP IX	EACH	2							2				2
5950	EROSION CONTROL BLANKET	SQYD	13225	4517	606	3422	2336	4094	3728	31929	14420	5913	20332	52261
5952	TEMP MULCH	SQYD	250559	23814						274373	188726	35638	224364	498737
5953	TEMP SEEDING AND PROTECTION	SQYD	187920	17861						205781	141545	26729	168274	374055
5963	INITIAL FERTILIZER	TON	6.7	0.7						7.4	4.8	1.0	5.8	13.2
5964	20-10-10	TON	11.1	1.2						12.3	8.1	1.7	9.7	22.0
5985	SEEDING AND PROTECTING	SQYD	275581	16142						291723	200118	41785	241904	533627
5992	AGRICULTURAL LIMESTONE	TON	133.1	14.2						14.3	96.7	20.2	116.9	264.2

NOTES:

- ① EARTHWORK NOTES
EXCAVATION 1,089,352 CY YD
INCLUDES
ROCK EXCAVATION 636,310
EMB BENCH EXC 17,933 CU YD
TRANSVERSE BENCH EXC 4,841 CU YD
SURF DITCH/CHAN CHANGE 6,719 CU YD
INLET/OUTLET DITCHES (FROM PIPE DRAINAGE SUMMARY 1,859 CU YD
EMBANKMENT 547,170 CU YD
INCLUDES MOT EMB 12,292 CU YD

ROCK ROADBED 122,246 CU YD

ESTIMATE FOR EARTHWORK CALCULATIONS ONLY. THE CONTRACTOR IS ADVISED THAT THE EARTHWORK CALCULATIONS SHOWN ARE FOR INFORMATION ONLY. ASSUMPTIONS FOR SHRINKAGE AND SWELL FACTORS ARE THE CONTRACTOR'S RESPONSIBILITY.
- ② APPROX. 154 ACRES. WORK UNDER GEOTECHNICAL NOTE 20 CONSIDERED INCIDENTAL TO ITEM 2545
- ③ INCLUDES QUANTITIES FROM PIPE DRAINAGE SUMMARY
- ④ FOR DUST CONTROL
- ⑤ REMOVED GUARDRAIL TO BE DELIVERED TO KYTC MAINTENANCE YARD.
- ⑥ NOT USED
- ⑦ INCLUDES 1000 SY TO BE USED AT THE ENGINEER'S DISCRETION
- ⑧ NOT USED
- ⑨ SEE GEOTECH NOTE NO. 21
- ⑩ ALL MATERIALS AND LABOR NECESSARY FOR COMPLETE INSTALLATION OF TEMPORARY SIGNS ARE INCIDENTAL TO ITEM 2562
- ⑪ FOR RELOCATION AND USE OF EXISTING "MOUNTAIN PARKWAY" SIGNS
- ⑫ FOR TEMPORARY LIGHTING OF THE TEMPORARY SIGNAL IN PHASE II, AND TEMPORARY LIGHTING OF THE PHASE II AND PHASE III CROSS OVERTS
- ⑬ SEE SHEETS 129A TO 129K FOR DETAILS

ALL STORM PIPES TO BE REMOVED UNLESS OTHERWISE SHOWN ON PLANS. CONTRARY TO STANDARD SPECIFICATIONS, THE REMOVAL OF PIPE & HEADWALLS ARE INCIDENTAL TO ITEM 2545 WHETHER SHOWN AS REMOVE OR NOT.

GENERAL SUMMARY

FILE NAME: I:\LEX\PRJ\000008298\10-126.70.CONTRACT PLANS AND PROPOSAL\CONTRACT PLAN SET\ROADWAY\PROO20F\SULDGN

USER: BCOOMES
DATE PLOTTED: November 29, 2016

E-SHEET NAME: PROO20F\SU

MicroStation v8.11.9.832

GENERAL SUMMARY

COUNTY OF	ITEM NO.	SHEET NO.
MORGAN WOLFE	10-126.70	R2F

ITEM	DESCRIPTION	UNIT	MOUNTAIN PARKWAY (WOLFE)	KY 205	KY 191	RAMP A	RAMP B	RAMP C	RAMP D	WOLFE COUNTY TOTAL	MOUNTAIN PARKWAY (MORGAN)	CR 1226	MORGAN COUNTY TOTAL	TOTAL PROJECT
1002	PERFORATED PIPE-8 IN ④	LF	250							250	250		250	500
1825	ISLAND CURB AND GUTTER	LF	346.7	100		220			90.3	757				757
1982	DELINEATOR FOR GUARDRAIL M/W	EACH	137			10	20	24	30	221	76		76	297
1983	DELINEATOR FOR GUARDRAIL M/Y	EACH	56			13			8	77	5		5	82
1987	DELINEATOR FOR GUARDRAIL B/W	EACH		18						18		18	18	36
2091	REMOVE PAVEMENT	SQYD	1676	2783						4459				4459
2159	TEMP DITCH	LF	3720	1271	171	963	657	1152	1049	8980	4056	1663	5719	14699
2160	CLEAN TEMP DITCH	LF	1860	636	86	482	329	576	525	4494	2028	832	2860	7354
2200	ROADWAY EXCAVATION ① ⑬	CUYD	229815	13817	617	220816	3053	6318	21666	496102	473769	119481	593249	1089352
2242	WATER ④	MGAL	1409	481	65	365	249	436	397	3402	1536	630	2166	5568
2262	FENCE-WOVEN WIRE TYPE 1	LF	11958	715						12673	16259		16259	28932
2265	REMOVE FENCE	LF	1395							1395	8060		8060	9455
2351	GUARDRAIL-STEEL W BEAM-S FACE	LF	6879.4	469.1		548.2	1242.6	1450	1725	12314.3	4300	750	5050	17364.3
2352	GUARDRAIL-STEEL W BEAM-D FACE	LF	575							575				575
2360	GUARDRAIL TERMINAL SECTION NO 1	EACH	13					1	1	15	1		1	16
2363	GUARDRAIL CONNECTOR TO BRIDGE END TYPE A	EACH	8	4		2			2	16				16
2367	GUARDRAIL END TREATMENT TYPE 1	EACH	4	1		1		1	2	9				9
2371	GUARDRAIL END TREATMENT TYPE 7	EACH										8	8	8
2373	GUARDRAIL END TREATMENT TYPE 3	EACH				1				1				1
2381	REMOVE GUARDRAIL ⑤	LF	9965.5						1607.5	11537	4929.5		4929.5	16502.5
2387	GUARDRAIL CONNECTOR TO BRIDGE END TYPE A-1	EACH	6			1			1	8				8
2391	GUARDRAIL END TREATMENT TY 4A	EACH				2				2				2
2399	EXTRA LENGTH POST	EACH									688		688	688
2429	RIGHT-OF-WAY MONUMENT TYPE 1	EACH	20	8						28	18		18	46
2432	WITNESS POST	EACH	3							3	3		3	6
2475	PLUG WATER WELL	EACH										1	1	1
2488	CHANNEL LINING CLASS IV ③	CUYD	7408	899		58		592	1961	10918	1289	568	1857	12774
2545	CLEARING AND GRUBBING ②	LS	1							1	1		1	1
2585	EDGE KEY	LF	22							22		18	18	40
2568	MOBILIZATION	LS	1							1	1		1	1
2569	DEMOBILIZATION	LS	1							1	1		1	1
2596	GEOTEXTILE FABRIC TYPE I	SQYD	10383	822						11205				11205
2599	GEOTEXTILE FABRIC TYPE IV ⑦	SQYD	77920	13988	1764	5103	4977	7586	6833	118171	104538		104538	222709
2610	RETAINING WALL-GABION	CUYD								49	49		49	49
2600	GEOTEXTILE FABRIC TYPE IV FOR PIPE	SQYD	2924	1817		104		73	27	4945	4527	108	4635	9580
2676	MOBILIZATION FOR MILLING AND TEXTURING	LS	1							1	1		1	1
2690	SAFELADING	CUYD	83.8	8.7						92.5	24.8		24.8	117.3
2696	SHOULDER RUMBLE STRIPS-SAWED	LF	22494	4027		2074	2324	3324	2937	37180	34268		34268	71448
2701	TEMP SILT FENCE	LF	3720	1271	171	963	657	1152	1049	8980	4056	1663	5719	14699
2703	SILT TRAP TYPE A	EACH	78	8						86	59	12	71	157
2704	SILT TRAP TYPE B	EACH	78	8						86	59	12	71	157
2705	SILT TRAP TYPE C	EACH	78	8						86	59	12	71	157
2706	CLEAN SILT TRAP TYPE A	EACH	78	8						86	59	12	71	157
2707	CLEAN SILT TRAP TYPE B	EACH	78	8						86	59	12	71	157
2708	CLEAN SILT TRAP TYPE C	EACH	78	8						86	59	12	71	157
2726	STAKING	LS	1							1	1		1	1
2731	REMOVE STRUCTURE - KY 205 BRIDGE OVER STATE ROAD FORK	LS		1						1				1
2731	REMOVE STRUCTURE - MT PKWY BRIDGE OVER KY 205	LS	1							1				1
2731	REMOVE STRUCTURE - MT PKWY BRIDGE OVER RED RIVER	LS	1							1				1
2731	REMOVE STRUCTURE - PARCEL 26 (WELL HOUSE)	LS										1	1	1
2929	CRASH CUSHION TYP IX	EACH	2							2				2
5950	EROSION CONTROL BLANKET	SQYD	13225	4517	606	3422	2336	4094	3728	31929	14420	5913	20332	52261
5952	TEMP MULCH	SQYD	250559	23814						274373	188726	35638	224364	498737
5953	TEMP SEEDING AND PROTECTION	SQYD	187920	17861						205781	141545	26729	168274	374055
5963	INITIAL FERTILIZER	TON	6.7	0.7						7.4	4.8	1.0	5.8	13.2
5964	20-10-10	TON	11.1	1.2						12.3	8.1	1.7	9.7	22.0
5985	SEEDING AND PROTECTING	SQYD	275581	16142						291723	200118	41785	241904	533627
5992	AGRICULTURAL LIMESTONE	TON	133.1	14.2						14.3	96.7	20.2	116.9	264.2

NOTES:

- ① EARTHWORK NOTES
EXCAVATION 1,089,352 CY YD
INCLUDES
ROCK EXCAVATION 636,310
EMB BENCH EXC 17,933 CU YD
TRANSVERSE BENCH EXC 4,841 CU YD
SURF DITCH/CHAN CHANGE 6,719 CU YD
INLET/OUTLET DITCHES (FROM PIPE DRAINAGE SUMMARY 1,859 CU YD
EMBANKMENT 547,170 CU YD
INCLUDES MOT EMB 12,292 CU YD

ROCK ROADBED 122,246 CU YD

ESTIMATE FOR EARTHWORK CALCULATIONS ONLY. THE CONTRACTOR IS ADVISED THAT THE EARTHWORK CALCULATIONS SHOWN ARE FOR INFORMATION ONLY. ASSUMPTIONS FOR SHRINKAGE AND SWELL FACTORS ARE THE CONTRACTOR'S RESPONSIBILITY.
- ② APPROX. 154 ACRES. WORK UNDER GEOTECHNICAL NOTE 20 CONSIDERED INCIDENTAL TO ITEM 2545
- ③ INCLUDES QUANTITIES FROM PIPE DRAINAGE SUMMARY
- ④ FOR DUST CONTROL
- ⑤ REMOVED GUARDRAIL TO BE DELIVERED TO KYTC MAINTENANCE YARD.
- ⑥ NOT USED
- ⑦ INCLUDES 1000 SY TO BE USED AT THE ENGINEER'S DISCRETION
- ⑧ NOT USED
- ⑨ SEE GEOTECH NOTE NO. 21
- ⑩ ALL MATERIALS AND LABOR NECESSARY FOR COMPLETE INSTALLATION OF TEMPORARY SIGNS ARE INCIDENTAL TO ITEM 2562
- ⑪ FOR RELOCATION AND USE OF EXISTING "MOUNTAIN PARKWAY" SIGNS
- ⑫ FOR TEMPORARY LIGHTING OF THE TEMPORARY SIGNAL IN PHASE II, AND TEMPORARY LIGHTING OF THE PHASE II AND PHASE III CROSS OVERTS
- ⑬ SEE SHEETS 129A TO 129K FOR DETAILS

ALL STORM PIPES TO BE REMOVED UNLESS OTHERWISE SHOWN ON PLANS. CONTRARY TO STANDARD SPECIFICATIONS, THE REMOVAL OF PIPE & HEADWALLS ARE INCIDENTAL TO ITEM 2545 WHETHER SHOWN AS REMOVE OR NOT.

GENERAL SUMMARY

FILE NAME: I:\LEX\PRJ\000008298\10-126.70 CONTRACT PLANS AND PROPOSAL\CONTRACT PLAN SET\ROADWAY\PROJ20F\SULDGN

USER: BCOOMES
DATE PLOTTED: November 29, 2016

E-SHEET NAME: PROJ20F\SU

MicroStation v8.11.9.832

GENERAL SUMMARY

COUNTY OF	ITEM NO.	SHEET NO.
MORGAN WOLFE	10-126.70	R2G

ITEM	DESCRIPTION	UNIT	MOUNTAIN PARKWAY (WOLFE)	KY 205	KY 191	RAMP A	RAMP B	RAMP C	RAMP D	WOLFE COUNTY TOTAL	MOUNTAIN PARKWAY (MORGAN)	CR 1226	MORGAN COUNTY TOTAL	TOTAL PROJECT
23274ENIIF	TURF REINFORCEMENT MAT I	SQYD		272					560	832				832
10020NS	FUEL ADJUSTMENT	DOLL								168865			165453	334318
10030NS	ASPHALT ADJUSTMENT	DOLL								165931			131761	297692
21289ED	LONGITUDINAL EDGE KEY	LF	686							686	1978		1978	2664
24814EC	PIPELINE INSPECTION	LF	1353	750		55		23	9	2190	1775	68	1843	4033
MAINTENANCE OF TRAFFIC														
00001	DENSE GRADED AGGREGATE BASE (6 IN)	TON								3699				3699
00212	CL2 ASPH BASE 1.00 PG64-22 (3 IN)	TON								1728				1728
00307	CL2 ASPH SURF 0.38B PG64-22 (1.25 IN)	TON								704				704
02003	RELOCATE TEMP CONC BARRIER	LF								1900				1900
02014	BARRICADE-TYPE III	EACH								6				6
02363	TEMP GUARDRAIL END CONNECTION TYPE A	EACH								2				2
02381	REMOVE GUARDRAIL	LF								2475.5				2475.5
02391	GUARDRAIL END TREATMET TY 4A	EACH								5				5
02396	REMOVE GUARDRAIL END TREATMENT	EACH								3				3
02397	TEMP GUARDRAIL	LF								2475.5				2475.5
02562	TEMPORARY SIGNS ⑩	SQFT								734			178	912
02650	MAINTAIN & CONTROL TRAFFIC	LS								1			1	1
02651	PHASE 1 DIVERSION	LS								1				1
02651	KY 205 DIVERSION	LS								1				1
02651	TEMP RAMP B	LS								1				1
02651	PHASE 3 DIVERSION	LS								1				1
02651	PHASE 3 KY 205 DIVERSION	LS								1				1
02655	PHASE 2 CROSSOVER	LS								1				1
02655	PHASE 3 CROSSOVER	LS								1				1
02655	TEMP RAMP C	LS								1				1
02655	PHASE 4 CROSSOVER	LS								1				1
02671	PORTABLE CHANGEABLE MESSAGE SIGN	EACH								1			1	2
02898	RELOCATE CRASH CUSHION	EACH								2				2
03171	CONCRETE BARRIER WALL TYPE 9T	LF								560			6160	6720
04934	TEMP SIGNAL MULTI PHASE	EACH								1				1
06510	PAVE STRIPING-TEMP PAINT-4 IN	LF								20702				20702
06511	PAVE STRIPING-TEMP PAINT-6 IN	LF								77304			37056	114360
06513	PAVE STRIPING-TEMP PAINT-12 IN	LF								163				163
06531	PAVE STRIPING REMOVAL-6 IN	LF								9769				9769
06533	PAVE STRIPING REMOVAL-12 INCH	LF								163				163
06586	PAVEMENT MARKER TYPE IVA-MY TEMP	EACH								134				134
06588	PAVEMENT MARKER TYPE IVA-BY TEMP	EACH								452				452
08104	CONCRETE - CLASS AA	CU YD								1.53				1.53
08901	CRASH CUSHION TYPE VI-BT TL2	EACH								1			6	7
08907	CRASH CUSHION TYPE VII-BT TL3	EACH								1				1
23274ENIIF	TURF REINFORCEMENT MAT I	SQYD								1399				1399
20418ED	REMOVE & RELOCATE SIGNS ⑪	EACH								5				5
20454NS835	TEMPORARY LIGHTING ⑫	LS								1				1
02655	TEMP ALTERNATE EAST END TIE-IN ⑬	LS											1	1

NOTES:

- ① EARTHWORK NOTES
EXCAVATION 1,089,352 CY YD
INCLUDES
ROCK EXCAVATION 636,310
EMB BENCH EXC 17,933 CU YD
TRANSVERSE BENCH EXC 4,841 CU YD
SURF DITCH/CHAN CHANGE 6,719 CU YD
INLET/OUTLET DITCHES (FROM PIPE DRAINAGE SUMMARY 1,859 CU YD
EMBANKMENT 547,170 CU YD
INCLUDES MOT EMB 12,292 CU YD

ROCK ROADBED 122,246 CU YD

ESTIMATE FOR EARTHWORK CALCULATIONS ONLY. THE CONTRACTOR IS ADVISED THAT THE EARTHWORK CALCULATIONS SHOWN ARE FOR INFORMATION ONLY. ASSUMPTIONS FOR SHRINKAGE AND SWELL FACTORS ARE THE CONTRACTOR'S RESPONSIBILITY.
- ② APPROX. 154 ACRES. WORK UNDER GEOTECHNICAL NOTE 20 CONSIDERED INCIDENTAL TO ITEM 2545
- ③ INCLUDES QUANTITIES FROM PIPE DRAINAGE SUMMARY
- ④ FOR DUST CONTROL
- ⑤ REMOVED GUARDRAIL TO BE DELIVERED TO KYTC MAINTENANCE YARD.
- ⑥ NOT USED
- ⑦ INCLUDES 1000 SY TO BE USED AT THE ENGINEER'S DISCRETION
- ⑧ NOT USED
- ⑨ SEE GEOTECH NOTE NO. 21
- ⑩ ALL MATERIALS AND LABOR NECESSARY FOR COMPLETE INSTALLATION OF TEMPORARY SIGNS ARE INCIDENTAL TO ITEM 2562
- ⑪ FOR RELOCATION AND USE OF EXISTING "MOUNTAIN PARKWAY" SIGNS
- ⑫ FOR TEMPORARY LIGHTING OF THE TEMPORARY SIGNAL IN PHASE II, AND TEMPORARY LIGHTING OF THE PHASE II AND PHASE III CROSS OVERS
- ⑬ SEE SHEETS 129A TO 129K FOR DETAILS

ALL STORM PIPES TO BE REMOVED UNLESS OTHERWISE SHOWN ON PLANS. CONTRARY TO STANDARD SPECIFICATIONS, THE REMOVAL OF PIPE & HEADWALLS ARE INCIDENTAL TO ITEM 2545 WHETHER SHOWN AS REMOVE OR NOT.

FILE NAME: I:\LEX\PRJ\000008298\DESIGN\PLAN SET\ROO20G5U.DGN
 USER: BCOOMES
 DATE PLOTTED: December 1, 2016
 E-SHEET NAME: ROO20G5U
 MicroStation v8.11.9.832

GENERAL SUMMARY

COUNTY OF	ITEM NO.	SHEET NO.
MORGAN WOLFE	10-126.70	R2G

ITEM	DESCRIPTION	UNIT	MOUNTAIN PARKWAY (WOLFE)	KY 205	KY 191	RAMP A	RAMP B	RAMP C	RAMP D	WOLFE COUNTY TOTAL	MOUNTAIN PARKWAY (MORGAN)	CR 1226	MORGAN COUNTY TOTAL	TOTAL PROJECT
DELETED BID ITEM AND QUANTITIES														
23274ENIIF	TURF REINFORCEMENT MAT 1	SQYD		272					560	832				832
1002ONS	FUEL ADJUSTMENT	DOLL								168865			165453	334318
1003ONS	ASPHALT ADJUSTMENT	DOLL								165931			131761	297692
21289ED	LONGITUDINAL EDGE KEY	LF	686							686	1978		1978	2664
24814EC	PIPELINE INSPECTION	LF	1353	750		55		23	9	2190	1775	68	1843	4033
MAINTENANCE OF TRAFFIC														
00001	DENSE GRADED AGGREGATE BASE (6 IN)	TON								3699				3699
00212	CL2 ASPH BASE 1.00 PG64-22 (3 IN)	TON								1728				1728
00307	CL2 ASPH SURF 0.38B PG64-22 (1.25 IN)	TON								704				704
02003	RELOCATE TEMP CONC BARRIER	LF								1900				1900
02014	BARRICADE-TYPE III	EACH								6				6
02363	TEMP GUARDRAIL END CONNECTION TYPE A	EACH								2				2
02381	REMOVE GUARDRAIL	LF								2475.5				2475.5
02391	GUARDRAIL END TREATMET TY 4A	EACH								5				5
02396	REMOVE GUARDRAIL END TREATMENT	EACH								3				3
02397	TEMP GUARDRAIL	LF								2475.5				2475.5
02562	TEMPORARY SIGNS ⑩	SQFT								734			178	912
02650	MAINTAIN & CONTROL TRAFFIC	LS								1			1	1
02651	PHASE 1 DIVERSION	LS								1				1
02651	KY 205 DIVERSION	LS								1				1
02651	TEMP RAMP B	LS								1				1
02651	PHASE 3 DIVERSION	LS								1				1
02651	PHASE 3 KY 205 DIVERSION	LS								1				1
02655	PHASE 2 CROSSOVER	LS								1				1
02655	PHASE 3 CROSSOVER	LS								1				1
02655	TEMP RAMP C	LS								1				1
02655	PHASE 4 CROSSOVER	LS								1				1
02671	PORTABLE CHANGEABLE MESSAGE SIGN	EACH								1			1	2
02898	RELOCATE CRASH CUSHION	EACH								2				2
03171	CONCRETE BARRIER WALL TYPE 9T	LF								560			6160	6720
04934	TEMP SIGNAL MULTI PHASE	EACH								1				1
06510	PAVE STRIPING-TEMP PAINT-4 IN	LF								20702				20702
06511	PAVE STRIPING-TEMP PAINT-6 IN	LF								77304			37056	114360
06513	PAVE STRIPING-TEMP PAINT-12 IN	LF								163				163
06531	PAVE STRIPING REMOVAL-6 IN	LF								9769				9769
06533	PAVE STRIPING REMOVAL-12 INCH	LF								163				163
06586	PAVEMENT MARKER TYPE IVA-MY TEMP	EACH								134				134
06588	PAVEMENT MARKER TYPE IVA-BY TEMP	EACH								452				452
08104	CONCRETE CLASS AA	CU YD								1.53				1.53
08901	CRASH CUSHION TYPE VI-BT TL2	EACH								1			6	7
08907	CRASH CUSHION TYPE VII-BT TL3	EACH								1				1
23274ENIIF	TURF REINFORCEMENT MAT 1	SQYD								1399				1399
20418ED	REMOVE & RELOCATE SIGNS ⑪	EACH								5				5
20454NS835	TEMPORARY LIGHTING ⑫	LS								1				1
02655	TEMP ALTERNATE EAST END TIE-IN ⑬	LS											1	1

NOTES:

- ① EARTHWORK NOTES
EXCAVATION 1,089,352 CY YD
INCLUDES
ROCK EXCAVATION 636,310
EMB BENCH EXC 17,933 CU YD
TRANSVERSE BENCH EXC 4,841 CU YD
SURF DITCH/CHAN CHANGE 6,719 CU YD
INLET/OUTLET DITCHES (FROM PIPE DRAINAGE SUMMARY 1,859 CU YD
EMBANKMENT 547,170 CU YD
INCLUDES MOT EMB 12,292 CU YD

ROCK ROADBED 122,246 CU YD

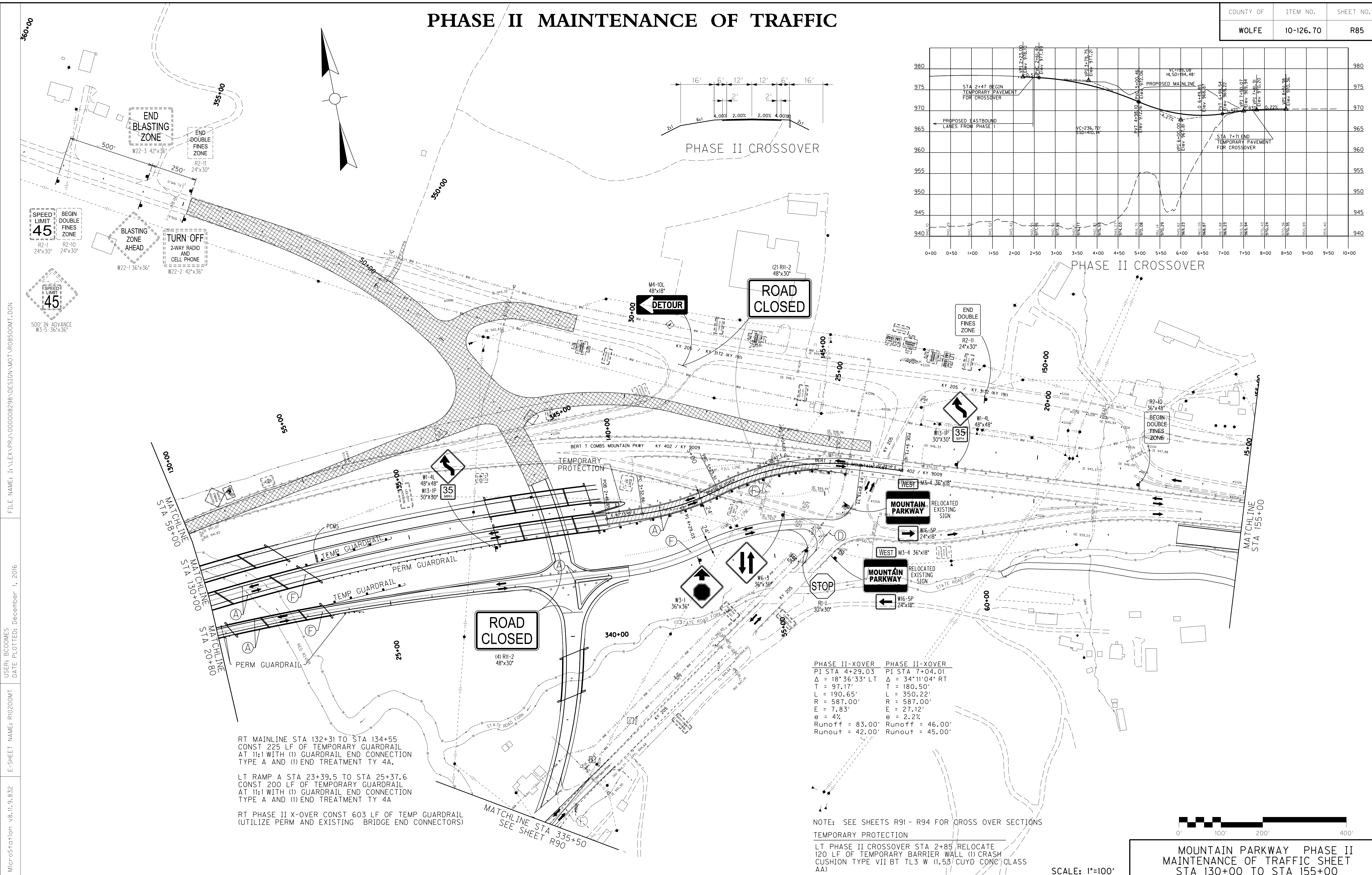
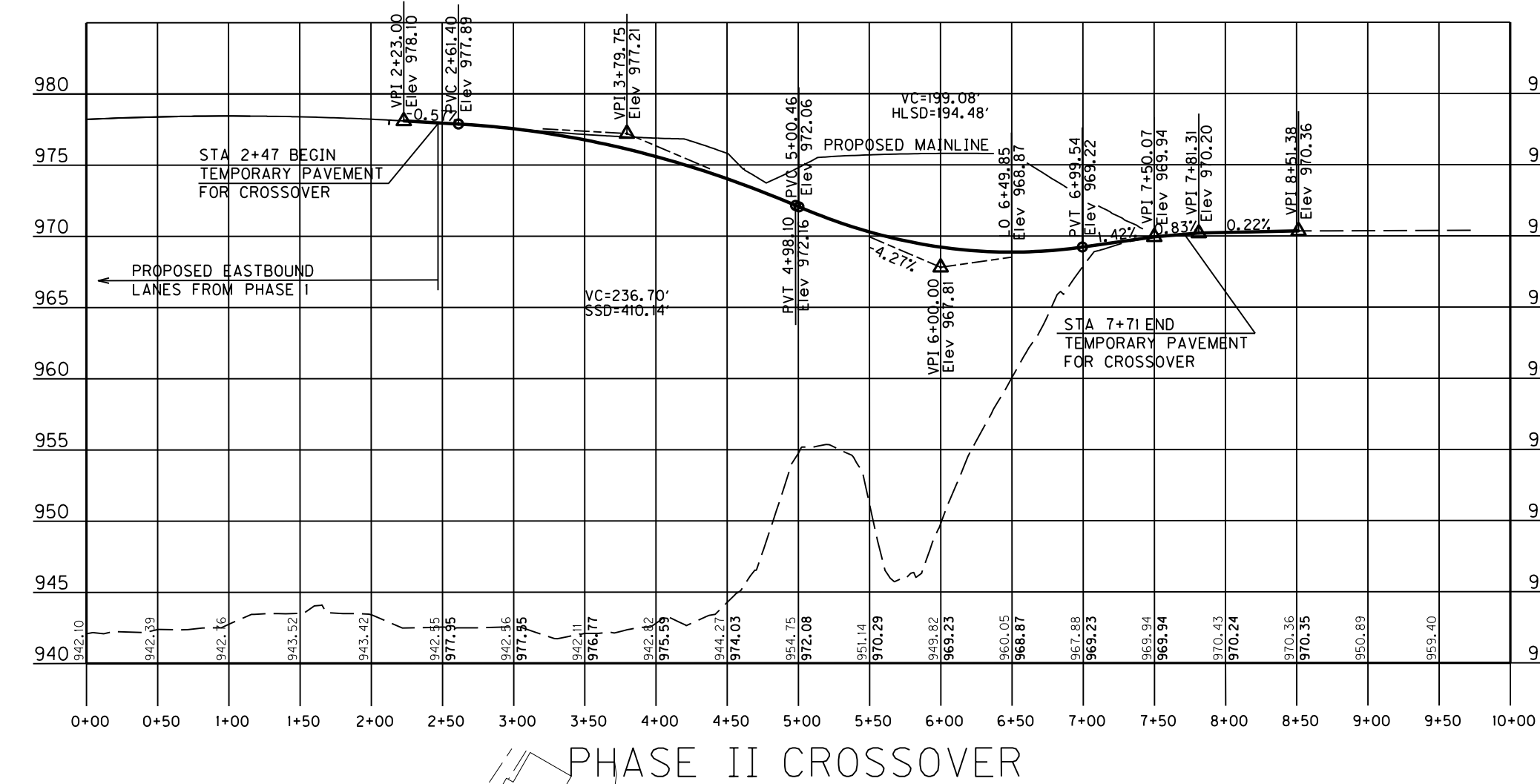
ESTIMATE FOR EARTHWORK CALCULATIONS ONLY. THE CONTRACTOR IS ADVISED THAT THE EARTHWORK CALCULATIONS SHOWN ARE FOR INFORMATION ONLY. ASSUMPTIONS FOR SHRINKAGE AND SWELL FACTORS ARE THE CONTRACTOR'S RESPONSIBILITY.
- ② APPROX. 154 ACRES. WORK UNDER GEOTECHNICAL NOTE 20 CONSIDERED INCIDENTAL TO ITEM 2545
- ③ INCLUDES QUANTITIES FROM PIPE DRAINAGE SUMMARY
- ④ FOR DUST CONTROL
- ⑤ REMOVED GUARDRAIL TO BE DELIVERED TO KYTC MAINTENANCE YARD.
- ⑥ NOT USED
- ⑦ INCLUDES 1000 SY TO BE USED AT THE ENGINEER'S DISCRETION
- ⑧ NOT USED
- ⑨ SEE GEOTECH NOTE NO. 21
- ⑩ ALL MATERIALS AND LABOR NECESSARY FOR COMPLETE INSTALLATION OF TEMPORARY SIGNS ARE INCIDENTAL TO ITEM 2562
- ⑪ FOR RELOCATION AND USE OF EXISTING "MOUNTAIN PARKWAY" SIGNS
- ⑫ FOR TEMPORARY LIGHTING OF THE TEMPORARY SIGNAL IN PHASE II, AND TEMPORARY LIGHTING OF THE PHASE II AND PHASE III CROSS OVERS
- ⑬ SEE SHEETS 129A TO 129K FOR DETAILS

ALL STORM PIPES TO BE REMOVED UNLESS OTHERWISE SHOWN ON PLANS. CONTRARY TO STANDARD SPECIFICATIONS, THE REMOVAL OF PIPE & HEADWALLS ARE INCIDENTAL TO ITEM 2545 WHETHER SHOWN AS REMOVE OR NOT.

FILE NAME: I:\LEX\PRJ\00008298\DESIGN\PLAN SET\ROO20G5U.DGN
 USER: BCOOMES
 DATE PLOTTED: December 1, 2016
 E-SHEET NAME: ROO20G5U
 MicroStation v8.11.9.832

PHASE II MAINTENANCE OF TRAFFIC

COUNTY OF	ITEM NO.	SHEET NO.
WOLFE	10-126.70	R85



RT MAINLINE STA 132+31 TO STA 134+55
 CONST 225 LF OF TEMPORARY GUARDRAIL
 AT 1:1 WITH (1) GUARDRAIL END CONNECTION
 TYPE A AND (1) END TREATMENT TY 4A.

LT RAMP A STA 23+39.5 TO STA 25+37.6
 CONST 200 LF OF TEMPORARY GUARDRAIL
 AT 1:1 WITH (1) GUARDRAIL END CONNECTION
 TYPE A AND (1) END TREATMENT TY 4A

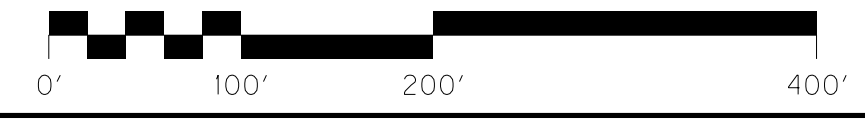
RT PHASE II X-OVER CONST 603 LF OF TEMP GUARDRAIL
 (UTILIZE PERM AND EXISTING BRIDGE END CONNECTORS)

PHASE II-XOVER	PHASE II-XOVER
PI STA 4+29.03	PI STA 7+04.01
$\Delta = 18^{\circ} 36' 33''$ LT	$\Delta = 34^{\circ} 11' 04''$ RT
T = 97.17'	T = 180.50'
L = 190.65'	L = 350.22'
R = 587.00'	R = 587.00'
E = 7.83'	E = 27.12'
e = 4%	e = 2.2%
Runoff = 83.00'	Runoff = 46.00'
Runout = 42.00'	Runout = 45.00'

NOTE: SEE SHEETS R91 - R94 FOR CROSS OVER SECTIONS

TEMPORARY PROTECTION

LT PHASE II CROSSOVER STA 2+85 RELOCATE
 120 LF OF TEMPORARY BARRIER WALL (1) CRASH
 CUSHION TYPE VII BT TL3 W (1.5) CUYD CONC CLASS
 AA)



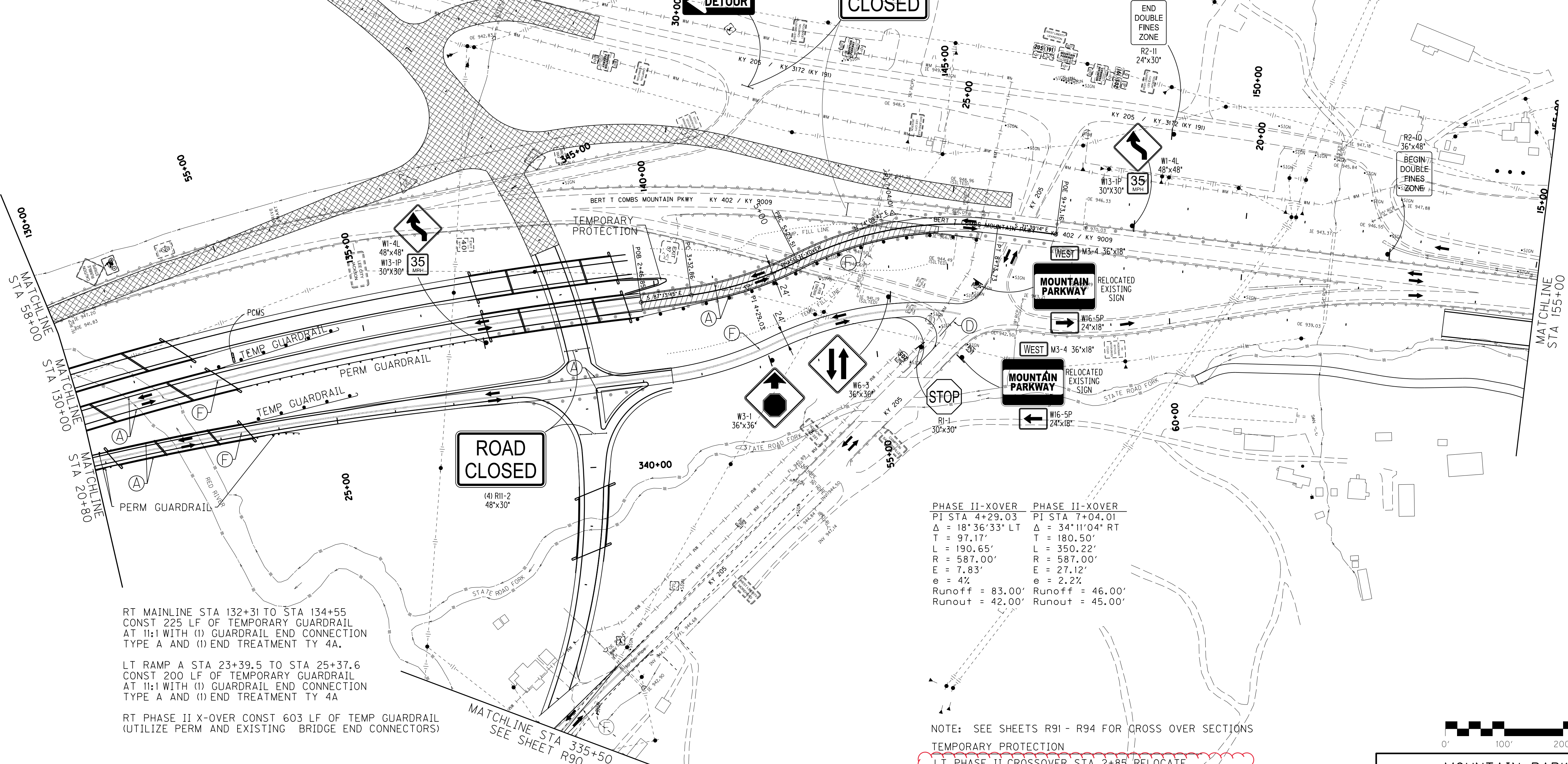
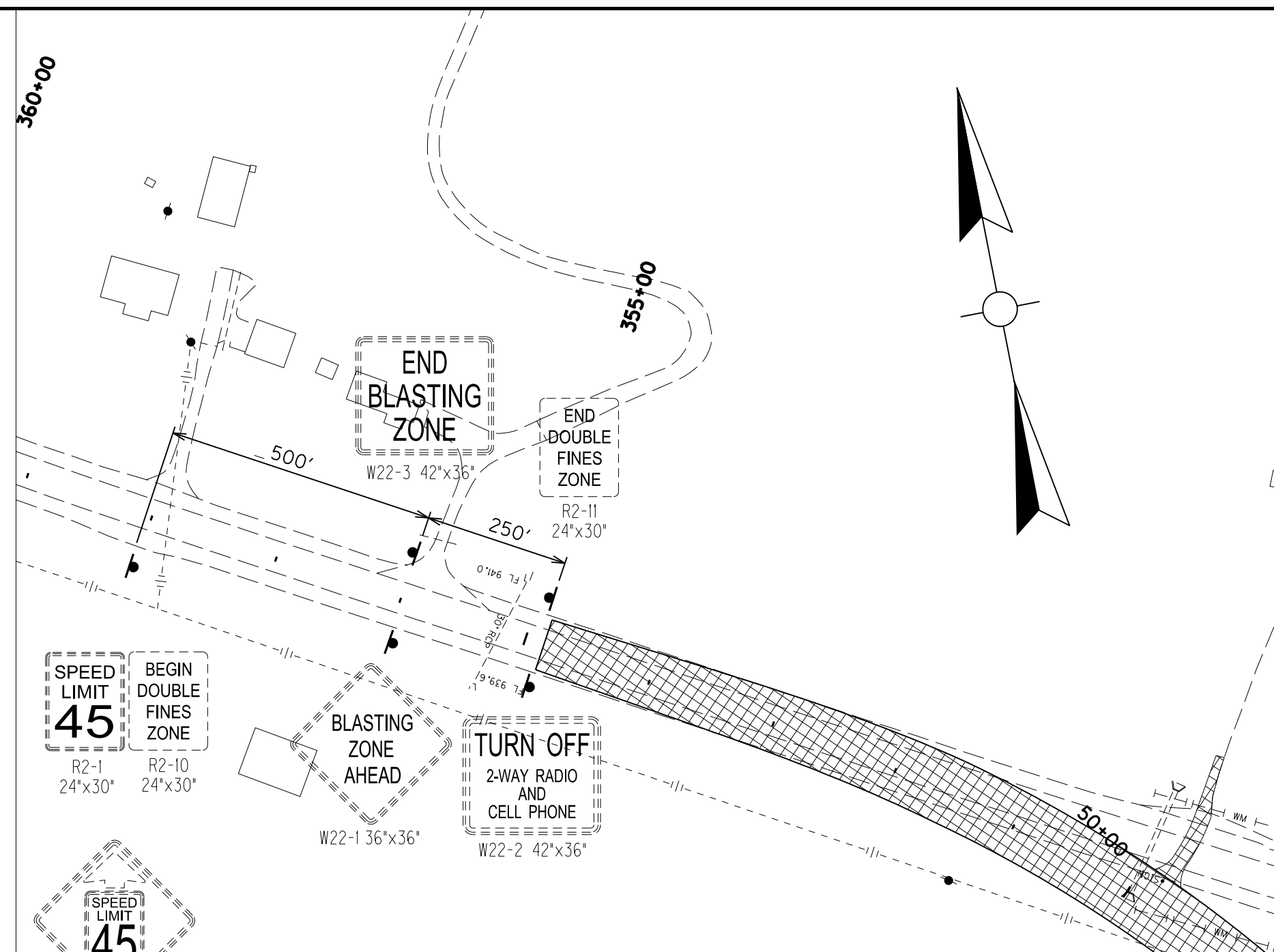
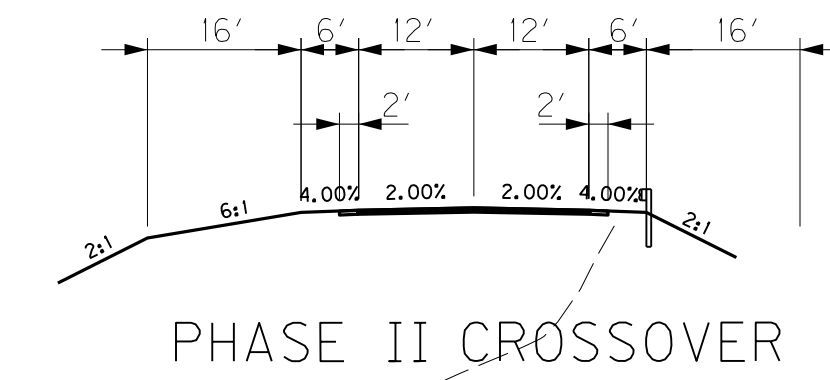
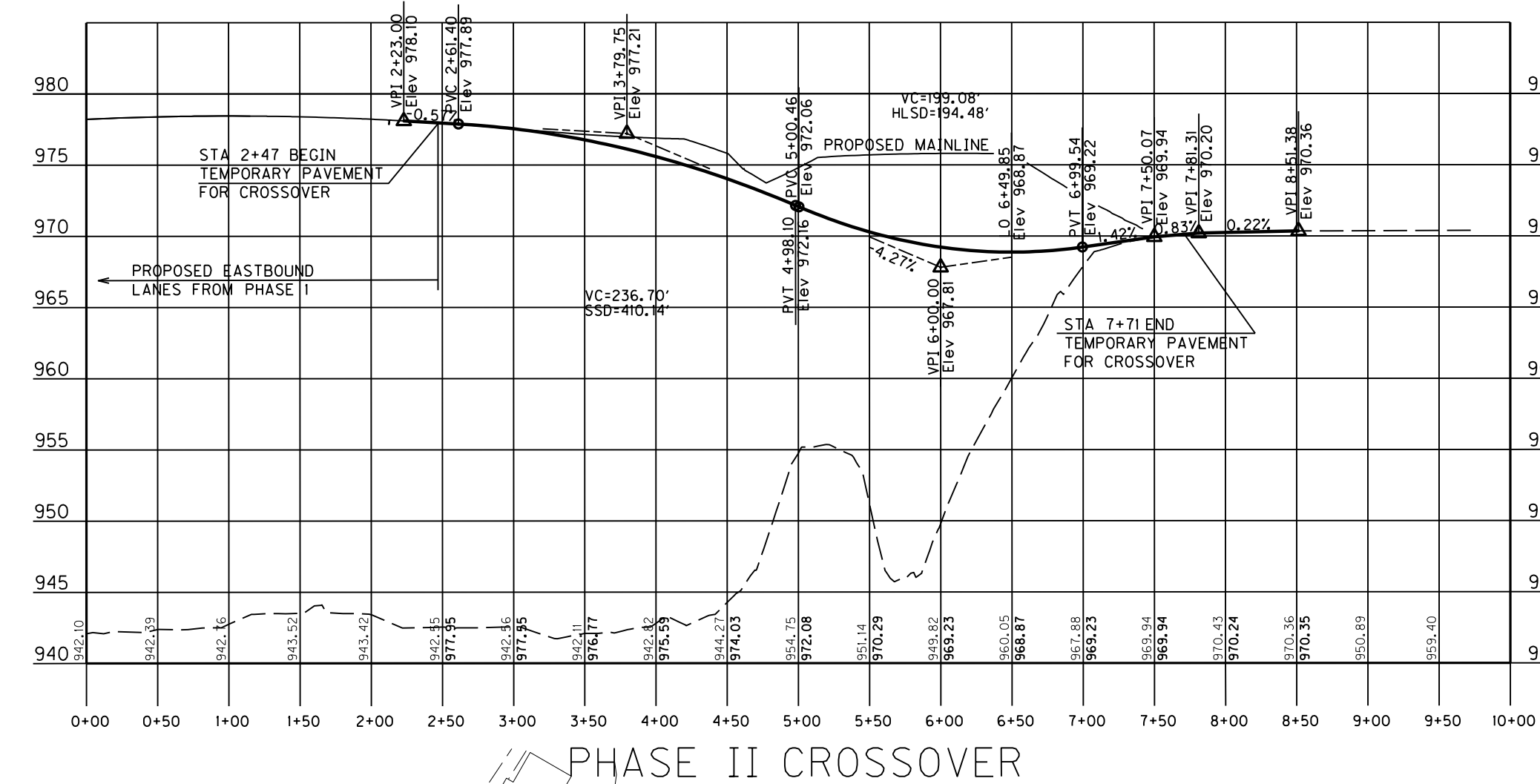
MOUNTAIN PARKWAY PHASE II
 MAINTENANCE OF TRAFFIC SHEET
 STA 130+00 TO STA 155+00

SCALE: 1"=100'

FILE NAME: I:\LEX\PRJ\000008298\DESIGN\MOT\R08500MT.DGN
 USER: BCOOMES
 DATE PLOTTED: December 1, 2016
 E-SHEET NAME: R10200MT
 MicroStation v8.11.9.832

PHASE II MAINTENANCE OF TRAFFIC

COUNTY OF	ITEM NO.	SHEET NO.
WOLFE	10-126.70	R85



RT MAINLINE STA 132+31 TO STA 134+55
CONST 225 LF OF TEMPORARY GUARDRAIL
AT 1:1 WITH (1) GUARDRAIL END CONNECTION
TYPE A AND (1) END TREATMENT TY 4A.

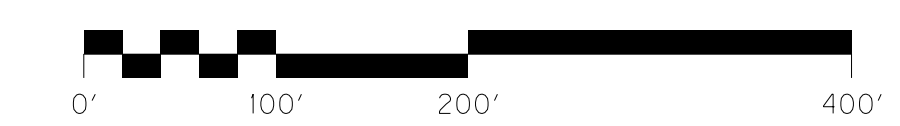
LT RAMP A STA 23+39.5 TO STA 25+37.6
CONST 200 LF OF TEMPORARY GUARDRAIL
AT 1:1 WITH (1) GUARDRAIL END CONNECTION
TYPE A AND (1) END TREATMENT TY 4A

RT PHASE II X-OVER CONST 603 LF OF TEMP GUARDRAIL
(UTILIZE PERM AND EXISTING BRIDGE END CONNECTORS)

PHASE II-XOVER	PHASE II-XOVER
PI STA 4+29.03	PI STA 7+04.01
$\Delta = 18^{\circ} 36' 33''$ LT	$\Delta = 34^{\circ} 11' 04''$ RT
T = 97.17'	T = 180.50'
L = 190.65'	L = 350.22'
R = 587.00'	R = 587.00'
E = 7.83'	E = 27.12'
e = 4%	e = 2.2%
Runoff = 83.00'	Runoff = 46.00'
Runout = 42.00'	Runout = 45.00'

NOTE: SEE SHEETS R91 - R94 FOR CROSS OVER SECTIONS

TEMPORARY PROTECTION
LT PHASE II CROSSOVER STA 2+85 RELOCATE
120 LF OF TEMPORARY BARRIER WALL (1) CRASH
CUSHION TYPE VII BT TL3 W (1.53' CUYD CONC) CLASS
AA)



MOUNTAIN PARKWAY PHASE II
MAINTENANCE OF TRAFFIC SHEET
STA 130+00 TO STA 155+00

SCALE: 1"=100'

FILE NAME: I:\LEX\PRJ\000008298\DESIGN\MOT\108500MT.DGN
USER: BCOOMES
DATE PLOTTED: December 1, 2016
E-SHEET NAME: R10200MT
MicroStation v8.11.9.832

SPECIAL NOTE FOR
MAINTENANCE OF TRAFFIC

MORGAN - WOLFE COUNTY
KY 9009 – MOUNTAIN PARKWAY WIDENING
ITEM NO. 10-126.70

The time allowed for the temporary traffic signal utilized during Maintenance of Traffic Phase II shall be limited to 154 calendar days. Time will start the day temporary signal is placed in service and used for traffic control. All construction work necessary to eliminate the need for the temporary traffic signal shall be completed before removal of the traffic signal.

Portable traffic signal units will not be allowed at the intersection of Ramp A with the Mountain Parkway. Due to location and layout of the intersection and likelihood of fog in the area, the temporary traffic signal shall be pole-mounted with in-ground detection loops to actuate the Ramp A approach. The signal ahead signs shall utilize flashers in order to increase awareness of the signalized intersection.

The recommended splits and phase timing shown on MOT plans shall be coordinated with the District 10 Traffic Engineer and adjusted if deemed necessary.

For each calendar day that the Contractor fails to complete the work after 154 calendar days, the Department will assess Special Liquidated Damages at the rate of \$5,000 per day.

These damages are in addition to all other liquidated damages.

MATERIAL SUMMARY

CONTRACT ID: 161059**121GR16D059-NHPP****DE08890091659**

MOUNTAIN PARKWAY(PW-9009) WIDEN THE MOUNTAIN PARKWAY TO 4 LANES FROM 0.45 MILES WEST OF KY-205(MP 56.8) TO CR-1226 PARKWAY ROAD TUNNEL(MP 59.30). BRIDGE WITH GRADE, DRAIN & SURFACE.

Project Line No	Bid Code	DESCRIPTION	Quantity	Unit
0005	00003	CRUSHED STONE BASE	28,889.00	TON
0010	00078	CRUSHED AGGREGATE SIZE NO 2	125.00	TON
0015	00100	ASPHALT SEAL AGGREGATE	352.80	TON
0020	00103	ASPHALT SEAL COAT	42.30	TON
0025	00190	LEVELING & WEDGING PG64-22	5,478.00	TON
0030	00212	CL2 ASPH BASE 1.00D PG64-22	4,427.00	TON
0035	00214	CL3 ASPH BASE 1.00D PG64-22	18,688.00	TON
0040	00307	CL2 ASPH SURF 0.38B PG64-22	1,652.00	TON
0045	00388	CL3 ASPH SURF 0.38B PG64-22	3,457.00	TON
0050	02676	MOBILIZATION FOR MILL & TEXT	1.00	LS
0055	02677	ASPHALT PAVE MILLING & TEXTURING	596.00	TON
0060	01002	PERFORATED PIPE-8 IN	250.00	LF
0065	01982	DELINEATOR FOR GUARDRAIL MONO DIRECTIONAL WHITE	76.00	EACH
0070	01983	DELINEATOR FOR GUARDRAIL MONO DIRECTIONAL YELLOW	5.00	EACH
0075	01987	DELINEATOR FOR GUARDRAIL BI DIRECTIONAL WHITE	18.00	EACH
0080	02159	TEMP DITCH	5,719.00	LF
0085	02160	CLEAN TEMP DITCH	2,860.00	LF
0090	02200	ROADWAY EXCAVATION	593,249.00	CUYD
0095	02242	WATER	2,166.00	MGAL
0100	02262	FENCE-WOVEN WIRE TYPE 1	16,259.00	LF
0105	02265	REMOVE FENCE	8,060.00	LF
0110	02351	GUARDRAIL-STEEL W BEAM-S FACE	5,050.00	LF
0115	02360	GUARDRAIL TERMINAL SECTION NO 1	1.00	EACH
0120	02371	GUARDRAIL END TREATMENT TYPE 7	8.00	EACH
0125	02381	REMOVE GUARDRAIL	4,929.50	LF
0130	02399	EXTRA LENGTH GUARDRAIL POST	688.00	EACH
0135	02429	RIGHT-OF-WAY MONUMENT TYPE 1	18.00	EACH
0140	02432	WITNESS POST	3.00	EACH
0145	02475	PLUG WATER WELL	1.00	EACH
0150	02488	CHANNEL LINING CLASS IV	1,857.00	CUYD
0155	02545	CLEARING AND GRUBBING - 68 ACRES-MORGAN	1.00	LS
0160	02585	EDGE KEY	18.00	LF
0165	02599	FABRIC-GEOTEXTILE TYPE IV	104,538.00	SQYD
0170	02600	FABRIC GEOTEXTILE TY IV FOR PIPE	4,635.00	SQYD
0175	02610	RETAINING WALL-GABION	49.00	CUYD
0180	02690	SAFELOADING	24.80	CUYD
0185	02696	SHOULDER RUMBLE STRIPS-SAWED	34,268.00	LF
0190	02701	TEMP SILT FENCE	5,719.00	LF
0195	02703	SILT TRAP TYPE A	71.00	EACH
0200	02704	SILT TRAP TYPE B	71.00	EACH
0205	02705	SILT TRAP TYPE C	71.00	EACH
0210	02706	CLEAN SILT TRAP TYPE A	71.00	EACH

MATERIAL SUMMARY

Project Line No	Bid Code	DESCRIPTION	Quantity	Unit
0215	02707	CLEAN SILT TRAP TYPE B	71.00	EACH
0220	02708	CLEAN SILT TRAP TYPE C	71.00	EACH
0225	02726	STAKING - MORGAN	1.00	LS
0230	02731	REMOVE STRUCTURE - PARCEL 26(WELL HOUSE)	1.00	LS
0235	05950	EROSION CONTROL BLANKET	20,332.00	SQYD
0240	05952	TEMP MULCH	224,364.00	SQYD
0245	05953	TEMP SEEDING AND PROTECTION	168,274.00	SQYD
0250	05963	INITIAL FERTILIZER	5.80	TON
0255	05964	20-10-10 FERTILIZER	9.70	TON
0260	05985	SEEDING AND PROTECTION	241,904.00	SQYD
0265	05992	AGRICULTURAL LIMESTONE	116.90	TON
0275	10020NS	FUEL ADJUSTMENT	165,453.00	DOLL
0280	10030NS	ASPHALT ADJUSTMENT	131,761.00	DOLL
0285	21289ED	LONGITUDINAL EDGE KEY	1,978.00	LF
0290	24814EC	PIPELINE INSPECTION	1,843.00	LF
0295	00078	CRUSHED AGGREGATE SIZE NO 2	30.00	TON
0300	00441	ENTRANCE PIPE-18 IN	35.00	LF
0305	00468	CULVERT PIPE-36 IN	633.00	LF
0310	00470	CULVERT PIPE-48 IN	87.00	LF
0315	00522	STORM SEWER PIPE-18 IN	467.00	LF
0320	00524	STORM SEWER PIPE-24 IN	167.00	LF
0325	00526	STORM SEWER PIPE-30 IN	547.00	LF
0330	01000	PERFORATED PIPE-4 IN	2,663.00	LF
0335	01010	NON-PERFORATED PIPE-4 IN	575.00	LF
0340	01020	PERF PIPE HEADWALL TY 1-4 IN	7.00	EACH
0345	01028	PERF PIPE HEADWALL TY 3-4 IN	1.00	EACH
0350	01032	PERF PIPE HEADWALL TY 4-4 IN	22.00	EACH
0355	01204	PIPE CULVERT HEADWALL-18 IN	5.00	EACH
0360	01208	PIPE CULVERT HEADWALL-24 IN	2.00	EACH
0365	01210	PIPE CULVERT HEADWALL-30 IN	3.00	EACH
0370	01212	PIPE CULVERT HEADWALL-36 IN	9.00	EACH
0375	01216	PIPE CULVERT HEADWALL-48 IN	2.00	EACH
0380	01450	S & F BOX INLET-OUTLET-18 IN	3.00	EACH
0385	01490	DROP BOX INLET TYPE 1	2.00	EACH
0390	01493	DROP BOX INLET TYPE 2	4.00	EACH
0395	01505	DROP BOX INLET TYPE 5B	6.00	EACH
0400	01506	DROP BOX INLET TYPE 5B MOD	1.00	EACH
0405	02562	TEMPORARY SIGNS	178.00	SQFT
0410	02650	MAINTAIN & CONTROL TRAFFIC - MORGAN	1.00	LS
0415	02655	CROSSOVER - MORGAN-TEMP ALTERNATE EAST END TIE-IN	1.00	LS
0420	02671	PORTABLE CHANGEABLE MESSAGE SIGN	1.00	EACH
0425	03171	CONCRETE BARRIER WALL TYPE 9T	6,160.00	LF
0430	06511	PAVE STRIPING-TEMP PAINT-6 IN	37,056.00	LF
0435	08901	CRASH CUSHION TY VI CLASS BT TL2	6.00	EACH
0440	02223	GRANULAR EMBANKMENT	149.00	CUYD
0445	02403	REMOVE CONCRETE MASONRY	3.00	CUYD
0450	08002	STRUCTURE EXCAV-SOLID ROCK	6.00	CUYD
0455	08003	FOUNDATION PREPARATION - MORGAN	1.00	LS
0460	08100	CONCRETE-CLASS A	207.00	CUYD

MATERIAL SUMMARY

Project Line No	Bid Code	DESCRIPTION	Quantity	Unit
0465	08150	STEEL REINFORCEMENT	12,349.00	LB
0470	06401	FLEXIBLE DELINEATOR POST-M/W	133.00	EACH
0475	06405	SBM ALUMINUM PANEL SIGNS	460.00	SQFT
0480	06407	SBM ALUM SHEET SIGNS .125 IN	80.00	SQFT
0485	06410	STEEL POST TYPE 1	112.00	LF
0490	06412	STEEL POST MILE MARKERS	4.00	EACH
0495	06441	GMSS GALV STEEL TYPE C	3,065.70	LB
0500	06490	CLASS A CONCRETE FOR SIGNS	10.19	CUYD
0505	06491	STEEL REINFORCEMENT FOR SIGNS	440.00	LB
0510	06515	PAVE STRIPING-PERM PAINT-6 IN	36,526.00	LF
0515	21596ND	GMSS TYPE D	8.00	EACH
0520	24489EC	INLAID PAVEMENT MARKER	204.00	EACH
0525	24631EC	BARCODE SIGN INVENTORY	12.00	EACH
0530	30012	MILE MARKER	4.00	EACH
0535	14003	W CAP EXISTING MAIN - 3 IN CUT AND CAP	1.00	EACH
0540	14004	W DIRECTIONAL BORE - 8 IN HDPE CASING PIPE	325.00	LF
0545	14004	W DIRECTIONAL BORE - CREEK CROSSING	40.00	LF
0550	14008	W ENCASEMENT STEEL BORED RANGE 3 - 10 IN STEEL	95.00	LF
0555	14013	W ENCASEMENT STEEL OPEN CUT RANGE 2 - 8 IN STEEL	310.00	LF
0560	14014	W ENCASEMENT STEEL OPEN CUT RANGE 3 - 10 IN STEEL	20.00	LF
0565	14019	W FIRE HYDRANT ASSEMBLY - 3 INCH NOZZLE BLOWOFF	1.00	EACH
0570	14023	W FLUSHING ASSEMBLY - 3 INCH BLOWOFF	1.00	EACH
0575	14028	W METER 3/4 INCH	1.00	EACH
0580	14029	W METER ADJUST - RECONNECT TO EXIST SERVICE	2.00	EACH
0585	14036	W PIPE DUCTILE IRON 06 INCH	400.00	LF
0590	14057	W PIPE PVC 03 INCH - SDR - 17	2,930.00	LF
0595	14059	W PIPE PVC 06 INCH - SDR - 17	2,640.00	LF
0600	14067	W PIPE POLYETHYLENE/PLASTIC 03 INCH - HDPE DR 9	440.00	LF
0605	14101	W TIE-IN SPECIAL - VARIOUS TYPES	3.00	EACH
0610	14131	W METER SPECIAL	1.00	EACH
0615	14571	W SERV PE/PLST SHORT SIDE 3/4 IN INST	1.00	EACH
0620	21233ED	ASPHALT PAVING REPLACEMENT - 140 LF	140.00	LF
0625	24441EC	GRAVEL REPLACEMENT DRIVEWAYS - 40 LF	40.00	LF
0630	02568	MOBILIZATION	1.00	LS
0635	02569	DEMOBILIZATION	1.00	LS
0640	02742	TRAINEE PAYMENT REIMBURSEMENT - 1 GROUP 2, 3 OR 4 OPERATOR	1,400.00	HOUR

CONTRACT ID: 161059

121GR16D059-NHPP

DE11990091659

MOUNTAIN PARKWAY(PW-9009) WIDEN THE MOUNTAIN PARKWAY TO 4 LANES FROM 0.45 MILES WEST OF KY-205(MP 56.8) TO CR-1226 PARKWAY ROAD TUNNEL(MP 59.30). BRIDGE WITH GRADE, DRAIN & SURFACE.

Project Line No	Bid Code	DESCRIPTION	Quantity	Unit
-----------------	----------	-------------	----------	------

MATERIAL SUMMARY

Project Line No	Bid Code	DESCRIPTION	Quantity	Unit
0005	00003	CRUSHED STONE BASE	47,261.00	TON
0010	00078	CRUSHED AGGREGATE SIZE NO 2	125.00	TON
0015	00100	ASPHALT SEAL AGGREGATE	371.30	TON
0020	00103	ASPHALT SEAL COAT	44.50	TON
0025	00190	LEVELING & WEDGING PG64-22	2,274.00	TON
0030	00212	CL2 ASPH BASE 1.00D PG64-22	3,982.00	TON
0035	00214	CL3 ASPH BASE 1.00D PG64-22	30,124.00	TON
0040	00307	CL2 ASPH SURF 0.38B PG64-22	1,488.00	TON
0045	00388	CL3 ASPH SURF 0.38B PG64-22	4,556.00	TON
0050	02676	MOBILIZATION FOR MILL & TEXT	1.00	LS
0055	02677	ASPHALT PAVE MILLING & TEXTURING	1,079.00	TON
0060	01002	PERFORATED PIPE-8 IN	250.00	LF
0065	01825	ISLAND CURB AND GUTTER	757.00	LF
0070	01982	DELINEATOR FOR GUARDRAIL MONO DIRECTIONAL WHITE	221.00	EACH
0075	01983	DELINEATOR FOR GUARDRAIL MONO DIRECTIONAL YELLOW	77.00	EACH
0080	01987	DELINEATOR FOR GUARDRAIL BI DIRECTIONAL WHITE	18.00	EACH
0085	02091	REMOVE PAVEMENT	4,459.00	SQYD
0090	02159	TEMP DITCH	8,980.00	LF
0095	02160	CLEAN TEMP DITCH	4,494.00	LF
0100	02200	ROADWAY EXCAVATION	496,102.00	CUYD
0105	02242	WATER	3,402.00	MGAL
0110	02262	FENCE-WOVEN WIRE TYPE 1	12,673.00	LF
0115	02265	REMOVE FENCE	1,395.00	LF
0120	02351	GUARDRAIL-STEEL W BEAM-S FACE	12,314.30	LF
0125	02352	GUARDRAIL-STEEL W BEAM-D FACE	575.00	LF
0130	02360	GUARDRAIL TERMINAL SECTION NO 1	15.00	EACH
0135	02363	GUARDRAIL CONNECTOR TO BRIDGE END TY A	16.00	EACH
0140	02367	GUARDRAIL END TREATMENT TYPE 1	9.00	EACH
0145	02373	GUARDRAIL END TREATMENT TYPE 3	1.00	EACH
0150	02381	REMOVE GUARDRAIL	11,537.00	LF
0155	02387	GUARDRAIL CONNECTOR TO BRIDGE END TY A-1	8.00	EACH
0160	02391	GUARDRAIL END TREATMENT TYPE 4A	2.00	EACH
0165	02429	RIGHT-OF-WAY MONUMENT TYPE 1	28.00	EACH
0170	02432	WITNESS POST	3.00	EACH
0175	02488	CHANNEL LINING CLASS IV	10,918.00	CUYD
0180	02545	CLEARING AND GRUBBING - 86 ACRES-WOLFE	1.00	LS
0185	02585	EDGE KEY	22.00	LF
0190	02596	FABRIC-GEOTEXTILE TYPE I	11,205.00	SQYD
0195	02599	FABRIC-GEOTEXTILE TYPE IV	118,171.00	SQYD
0200	02600	FABRIC GEOTEXTILE TY IV FOR PIPE	4,945.00	SQYD
0205	02690	SAFELOADING	92.50	CUYD
0210	02696	SHOULDER RUMBLE STRIPS-SAWED	37,180.00	LF
0215	02701	TEMP SILT FENCE	8,980.00	LF
0220	02703	SILT TRAP TYPE A	86.00	EACH
0225	02704	SILT TRAP TYPE B	86.00	EACH
0230	02705	SILT TRAP TYPE C	86.00	EACH
0235	02706	CLEAN SILT TRAP TYPE A	86.00	EACH
0240	02707	CLEAN SILT TRAP TYPE B	86.00	EACH
0245	02708	CLEAN SILT TRAP TYPE C	86.00	EACH

MATERIAL SUMMARY

Project Line No	Bid Code	DESCRIPTION	Quantity	Unit
0250	02726	STAKING - WOLFE	1.00	LS
0255	02731	REMOVE STRUCTURE - WOLFE- KY 205 BRIDGE OVER STATE ROAD FORK	1.00	LS
0260	02731	REMOVE STRUCTURE - WOLFE- MT PKWY BRIDGE OVER KY 205	1.00	LS
0265	02731	REMOVE STRUCTURE - WOLFE- MT PKWY BRIDGE OVER RED RIVER	1.00	LS
0270	02929	CRASH CUSHION TYPE IX	2.00	EACH
0275	05950	EROSION CONTROL BLANKET	31,929.00	SQYD
0280	05952	TEMP MULCH	274,373.00	SQYD
0285	05953	TEMP SEEDING AND PROTECTION	205,781.00	SQYD
0290	05963	INITIAL FERTILIZER	7.40	TON
0295	05964	20-10-10 FERTILIZER	12.30	TON
0300	05985	SEEDING AND PROTECTION	291,723.00	SQYD
0305	05992	AGRICULTURAL LIMESTONE	14.30	TON
0315	10020NS	FUEL ADJUSTMENT	168,865.00	DOLL
0320	10030NS	ASPHALT ADJUSTMENT	165,931.00	DOLL
0325	21289ED	LONGITUDINAL EDGE KEY	686.00	LF
0330	23274EN11F	TURF REINFORCEMENT MAT 1	832.00	SQYD
0335	24814EC	PIPELINE INSPECTION	2,190.00	LF
0340	00078	CRUSHED AGGREGATE SIZE NO 2	35.00	TON
0345	00443	ENTRANCE PIPE-24 IN	214.00	LF
0350	00445	ENTRANCE PIPE-30 IN	30.00	LF
0355	00464	CULVERT PIPE-24 IN	115.00	LF
0360	00465	CULVERT PIPE-27 IN	129.00	LF
0365	00468	CULVERT PIPE-36 IN	273.00	LF
0370	00469	CULVERT PIPE-42 IN	53.00	LF
0375	00471	CULVERT PIPE-54 IN	101.00	LF
0380	00522	STORM SEWER PIPE-18 IN	1,347.00	LF
0385	00524	STORM SEWER PIPE-24 IN	572.00	LF
0390	01000	PERFORATED PIPE-4 IN	5,723.00	LF
0395	01010	NON-PERFORATED PIPE-4 IN	580.00	LF
0400	01020	PERF PIPE HEADWALL TY 1-4 IN	15.00	EACH
0405	01024	PERF PIPE HEADWALL TY 2-4 IN	2.00	EACH
0410	01028	PERF PIPE HEADWALL TY 3-4 IN	6.00	EACH
0415	01032	PERF PIPE HEADWALL TY 4-4 IN	12.00	EACH
0420	01204	PIPE CULVERT HEADWALL-18 IN	9.00	EACH
0425	01208	PIPE CULVERT HEADWALL-24 IN	5.00	EACH
0430	01210	PIPE CULVERT HEADWALL-30 IN	1.00	EACH
0435	01214	PIPE CULVERT HEADWALL-42 IN	1.00	EACH
0440	01223	PIPE CULVERT HEADWALL-27 IN	2.00	EACH
0445	01453	S & F BOX INLET-OUTLET-36 IN	2.00	EACH
0450	01480	CURB BOX INLET TYPE B	9.00	EACH
0455	01490	DROP BOX INLET TYPE 1	7.00	EACH
0460	01493	DROP BOX INLET TYPE 2	1.00	EACH
0465	01505	DROP BOX INLET TYPE 5B	4.00	EACH
0470	01506	DROP BOX INLET TYPE 5B MOD	1.00	EACH
0475	01538	DROP BOX INLET TYPE 7	1.00	EACH
0480	01541	DROP BOX INLET TYPE 10	1.00	EACH
0485	01642	JUNCTION BOX-18 IN	3.00	EACH
0490	01767	MANHOLE TYPE C	1.00	EACH

MATERIAL SUMMARY

Project Line No	Bid Code	DESCRIPTION	Quantity	Unit
0495	24026EC	PIPE CULVERT HEADWALL-54 IN	2.00	EACH
0500	00001	DGA BASE	3,699.00	TON
0505	00212	CL2 ASPH BASE 1.00D PG64-22	1,728.00	TON
0510	00307	CL2 ASPH SURF 0.38B PG64-22	704.00	TON
0515	02003	RELOCATE TEMP CONC BARRIER	1,900.00	LF
0520	02014	BARRICADE-TYPE III	6.00	EACH
0525	02363	GUARDRAIL CONNECTOR TO BRIDGE END TY A	2.00	EACH
0530	02381	REMOVE GUARDRAIL	2,475.50	LF
0535	02391	GUARDRAIL END TREATMENT TYPE 4A	5.00	EACH
0540	02396	REMOVE GUARDRAIL END TREATMENT	3.00	EACH
0545	02397	TEMP GUARDRAIL	2,475.50	LF
0550	02562	TEMPORARY SIGNS	734.00	SQFT
0555	02650	MAINTAIN & CONTROL TRAFFIC - WOLFE	1.00	LS
0560	02651	DIVERSIONS (BY-PASS DETOURS) - WOLFE- KY-205	1.00	LS
0565	02651	DIVERSIONS (BY-PASS DETOURS) - WOLFE- PHASE I	1.00	LS
0570	02651	DIVERSIONS (BY-PASS DETOURS) - WOLFE- PHASE III	1.00	LS
0575	02651	DIVERSIONS (BY-PASS DETOURS) - WOLFE- PHASE III KY-205	1.00	LS
0580	02651	DIVERSIONS (BY-PASS DETOURS) - WOLFE- TEMP RAMP B	1.00	LS
0585	02655	CROSSOVER - WOLFE- PHASE II	1.00	LS
0590	02655	CROSSOVER - WOLFE- PHASE IV	1.00	LS
0595	02655	CROSSOVER - WOLFE- TEMP RAMP C	1.00	LS
0600	02655	CROSSOVER - WOLFE-PHASE III	1.00	LS
0605	02671	PORTABLE CHANGEABLE MESSAGE SIGN	1.00	EACH
0610	02898	RELOCATE CRASH CUSHION	2.00	EACH
0615	03171	CONCRETE BARRIER WALL TYPE 9T	560.00	LF
0620	04934	TEMP SIGNAL MULTI PHASE	1.00	EACH
0625	06510	PAVE STRIPING-TEMP PAINT-4 IN	20,702.00	LF
0630	06511	PAVE STRIPING-TEMP PAINT-6 IN	77,304.00	LF
0635	06513	PAVE STRIPING-TEMP PAINT-12 IN	163.00	LF
0640	06531	PAVE STRIPING REMOVAL-6 IN	9,769.00	LF
0645	06533	PAVE STRIPING REMOVAL-12 IN	163.00	LF
0650	06586	PAVEMENT MARKER TY IVA-MY TEMP	134.00	EACH
0655	06588	PAVEMENT MARKER TY IVA-BY TEMP	452.00	EACH
0660	08901	CRASH CUSHION TY VI CLASS BT TL2	1.00	EACH
0665	08907	CRASH CUSHION TY VII CLASS B TL3	1.00	EACH
0670	20418ED	REMOVE & RELOCATE SIGNS	5.00	EACH
0675	20454NS835	TEMPORARY LIGHTING - WOLFE	1.00	LS
0680	23274EN11F	TURF REINFORCEMENT MAT 1	1,399.00	SQYD
0685	06401	FLEXIBLE DELINEATOR POST-M/W	74.00	EACH
0690	06403	FLEXIBLE DELINEATOR POST-B/W	74.00	EACH
0695	06404	FLEXIBLE DELINEATOR POST-M/Y	87.00	EACH
0700	06405	SBM ALUMINUM PANEL SIGNS	476.50	SQFT
0705	06407	SBM ALUM SHEET SIGNS .125 IN	536.10	SQFT
0710	06410	STEEL POST TYPE 1	980.00	LF
0715	06412	STEEL POST MILE MARKERS	2.00	EACH
0720	06441	GMSS GALV STEEL TYPE C	3,022.80	LB
0725	06490	CLASS A CONCRETE FOR SIGNS	19.59	CUYD
0730	06491	STEEL REINFORCEMENT FOR SIGNS	440.00	LB
0735	06514	PAVE STRIPING-PERM PAINT-4 IN	12,720.00	LF

MATERIAL SUMMARY

Project Line No	Bid Code	DESCRIPTION	Quantity	Unit
0740	06515	PAVE STRIPING-PERM PAINT-6 IN	43,096.00	LF
0745	06517	PAVE STRIPING-PERM PAINT-12 IN	2,258.00	LF
0750	06574	PAVE MARKING-THERMO CURV ARROW	8.00	EACH
0755	20205EC	PAVE MARK STOP BAR-24 IN PAINT	60.00	LF
0760	20418ED	REMOVE & RELOCATE SIGNS	4.00	EACH
0765	21596ND	GMSS TYPE D	49.00	EACH
0770	24489EC	INLAID PAVEMENT MARKER	525.00	EACH
0775	24631EC	BARCODE SIGN INVENTORY	81.00	EACH
0780	30012	MILE MARKER	2.00	EACH
0785	04701	POLE 40 FT MTG HT	11.00	EACH
0790	04724	BRACKET 12 FT	11.00	EACH
0795	04740	POLE BASE	11.00	EACH
0800	04750	TRANSFORMER BASE	11.00	EACH
0805	04761	LIGHTING CONTROL EQUIPMENT	1.00	EACH
0810	04780	FUSED CONNECTOR KIT	22.00	EACH
0815	04797	CONDUIT-3 IN	745.00	LF
0820	04820	TRENCHING AND BACKFILLING	1,965.00	LF
0825	04832	WIRE-NO. 12	1,320.00	LF
0830	04860	CABLE-NO. 8/3C DUCTED	1,965.00	LF
0835	20391NS835	ELECTRICAL JUNCTION BOX TYPE A	14.00	EACH
0840	24589ED	LED LUMINAIRE	11.00	EACH
0845	02231	STRUCTURE GRANULAR BACKFILL	482.00	CUYD
0850	02998	MASONRY COATING	3,293.00	SQYD
0855	03299	ARMORED EDGE FOR CONCRETE	164.00	LF
0860	08001	STRUCTURE EXCAVATION-COMMON	402.00	CUYD
0865	08020	CRUSHED AGGREGATE SLOPE PROT	504.00	TON
0870	08033	TEST PILES	418.00	LF
0875	08046	PILES-STEEL HP12X53	4,137.00	LF
0880	08094	PILE POINTS-12 IN	136.00	EACH
0885	08100	CONCRETE-CLASS A	639.50	CUYD
0890	08104	CONCRETE-CLASS AA	819.70	CUYD
0895	08150	STEEL REINFORCEMENT	98,090.00	LB
0900	08151	STEEL REINFORCEMENT-EPOXY COATED	196,855.00	LB
0905	21532ED	RAIL SYSTEM TYPE III	973.00	LF
0910	24098EC	PPC I-BEAM TYPE HN 66-49	2,393.50	LF
0915	02231	STRUCTURE GRANULAR BACKFILL	662.00	CUYD
0920	02998	MASONRY COATING	4,195.00	SQYD
0925	03299	ARMORED EDGE FOR CONCRETE	213.00	LF
0930	08001	STRUCTURE EXCAVATION-COMMON	131.00	CUYD
0935	08019	CYCLOPEAN STONE RIP RAP	2,358.00	TON
0940	08033	TEST PILES	184.00	LF
0945	08039	PRE-DRILLING FOR PILES	67.00	LF
0950	08046	PILES-STEEL HP12X53	780.00	LF
0955	08094	PILE POINTS-12 IN	28.00	EACH
0960	08100	CONCRETE-CLASS A	678.50	CUYD
0965	08104	CONCRETE-CLASS AA	1,110.00	CUYD
0970	08150	STEEL REINFORCEMENT	93,448.00	LB
0975	08151	STEEL REINFORCEMENT-EPOXY COATED	330,263.00	LB
0980	20745ED	ROCK SOUNDINGS	248.00	LF
0985	20746ED	ROCK CORINGS	276.00	LF

MATERIAL SUMMARY

Project Line No	Bid Code	DESCRIPTION	Quantity	Unit
0990	21420ED	DRILLED SHAFT-66 IN (COMMON)	248.00	LF
0995	21421ED	DRILLED SHAFT-60 IN (SOLID ROCK)	96.00	LF
1000	21532ED	RAIL SYSTEM TYPE III	1,238.00	LF
1005	24098EC	PPC I-BEAM TYPE HN 66-49	3,033.80	LF
1010	02231	STRUCTURE GRANULAR BACKFILL	140.00	CUYD
1015	02998	MASONRY COATING	1,030.00	SQYD
1020	03299	ARMORED EDGE FOR CONCRETE	58.00	LF
1025	08001	STRUCTURE EXCAVATION-COMMON	150.00	CUYD
1030	08002	STRUCTURE EXCAV-SOLID ROCK	4.00	CUYD
1035	08019	CYCLOPEAN STONE RIP RAP	1,005.00	TON
1040	08033	TEST PILES	75.00	LF
1045	08039	PRE-DRILLING FOR PILES	60.00	LF
1050	08046	PILES-STEEL HP12X53	228.00	LF
1055	08094	PILE POINTS-12 IN	12.00	EACH
1060	08100	CONCRETE-CLASS A	134.20	CUYD
1065	08104	CONCRETE-CLASS AA	249.90	CUYD
1070	08150	STEEL REINFORCEMENT	17,979.00	LB
1075	08151	STEEL REINFORCEMENT-EPOXY COATED	57,338.00	LB
1080	08634	PRECAST PC I BEAM TYPE 4	922.50	LF
1085	20745ED	ROCK SOUNDINGS	87.00	LF
1090	20746ED	ROCK CORINGS	92.00	LF
1095	21420ED	DRILLED SHAFT-66 IN (COMMON)	87.00	LF
1100	21421ED	DRILLED SHAFT-60 IN (SOLID ROCK)	32.00	LF
1105	21532ED	RAIL SYSTEM TYPE III	470.00	LF
1110	02231	STRUCTURE GRANULAR BACKFILL	146.00	CUYD
1115	02998	MASONRY COATING	783.00	SQYD
1120	03299	ARMORED EDGE FOR CONCRETE	61.00	LF
1125	08001	STRUCTURE EXCAVATION-COMMON	214.00	CUYD
1130	08019	CYCLOPEAN STONE RIP RAP	1,438.00	TON
1135	08033	TEST PILES	89.00	LF
1140	08046	PILES-STEEL HP12X53	293.00	LF
1145	08094	PILE POINTS-12 IN	12.00	EACH
1150	08100	CONCRETE-CLASS A	133.60	CUYD
1155	08104	CONCRETE-CLASS AA	197.30	CUYD
1160	08150	STEEL REINFORCEMENT	14,904.00	LB
1165	08151	STEEL REINFORCEMENT-EPOXY COATED	48,351.00	LB
1170	08634	PRECAST PC I BEAM TYPE 4	642.50	LF
1175	20745ED	ROCK SOUNDINGS	75.00	LF
1180	20746ED	ROCK CORINGS	92.00	LF
1185	21420ED	DRILLED SHAFT-66 IN (COMMON)	75.00	LF
1190	21421ED	DRILLED SHAFT-60 IN (SOLID ROCK)	32.00	LF
1195	21532ED	RAIL SYSTEM TYPE III	331.00	LF
1200	23813EC	DECK DRAIN	5.00	EACH
1205	02231	STRUCTURE GRANULAR BACKFILL	277.00	CUYD
1210	02998	MASONRY COATING	417.00	SQYD
1215	03299	ARMORED EDGE FOR CONCRETE	111.00	LF
1220	08019	CYCLOPEAN STONE RIP RAP	849.00	TON
1225	08033	TEST PILES	93.00	LF
1230	08046	PILES-STEEL HP12X53	535.00	LF
1235	08094	PILE POINTS-12 IN	18.00	EACH

MATERIAL SUMMARY

Project Line No	Bid Code	DESCRIPTION	Quantity	Unit
1240	08100	CONCRETE-CLASS A	69.10	CUYD
1245	08104	CONCRETE-CLASS AA	215.00	CUYD
1250	08151	STEEL REINFORCEMENT-EPOXY COATED	42,336.00	LB
1255	08633	PRECAST PC I BEAM TYPE 3	1,026.50	LF
1260	21532ED	RAIL SYSTEM TYPE III	211.00	LF
1265	02223	GRANULAR EMBANKMENT	302.00	CUYD
1270	02403	REMOVE CONCRETE MASONRY	28.00	CUYD
1275	08003	FOUNDATION PREPARATION	1.00	LS
1280	08100	CONCRETE-CLASS A	398.00	CUYD
1285	08150	STEEL REINFORCEMENT	45,590.00	LB
1290	02403	REMOVE CONCRETE MASONRY	6.00	CUYD
1295	08002	STRUCTURE EXCAV-SOLID ROCK	9.00	CUYD
1300	08003	FOUNDATION PREPARATION	1.00	LS
1305	08100	CONCRETE-CLASS A	47.70	CUYD
1310	08150	STEEL REINFORCEMENT	3,228.00	LB
1315	14001	W AIR RELEASE VALVE 3/4 INCH	2.00	EACH
1320	14003	W CAP EXISTING MAIN	7.00	EACH
1325	14004	W DIRECTIONAL BORE	240.00	LF
1330	14008	W ENCASEMENT STEEL BORED RANGE 3	889.00	LF
1335	14014	W ENCASEMENT STEEL OPEN CUT RANGE 3	40.00	LF
1340	14014	W ENCASEMENT STEEL OPEN CUT RANGE 3	20.00	LF
1345	14022	W FLUSH HYDRANT ASSEMBLY	3.00	EACH
1350	14028	W METER 3/4 INCH	2.00	EACH
1355	14030	W METER RELOCATE	2.00	EACH
1360	14057	W PIPE PVC 03 INCH	912.00	LF
1365	14059	W PIPE PVC 06 INCH	5,348.00	LF
1370	14092	W TIE-IN 03 INCH	1.00	EACH
1375	14094	W TIE-IN 06 INCH	6.00	EACH
1380	14103	W VALVE 03 INCH	1.00	EACH
1385	14105	W VALVE 06 INCH	11.00	EACH
1390	14144	W LINE MARKER	6.00	EACH
1395	02568	MOBILIZATION	1.00	LS
1400	02569	DEMOBILIZATION	1.00	LS
1405	08104	CONCRETE-CLASS AA - (ADDED: 12-2-16)	1.53	CUYD

PROPOSAL BID ITEMS

161059

Page 1 of 9

Report Date 12/2/16

Section: 0001 - PAVING

LINE	BID CODE	ALT	DESCRIPTION	QUANTITY	UNIT	UNIT PRIC	FP	AMOUNT
0010	00003		CRUSHED STONE BASE	76,150.00	TON		\$	
0020	00078		CRUSHED AGGREGATE SIZE NO 2	250.00	TON		\$	
0030	00100		ASPHALT SEAL AGGREGATE	724.10	TON		\$	
0040	00103		ASPHALT SEAL COAT	86.80	TON		\$	
0050	00190		LEVELING & WEDGING PG64-22	7,752.00	TON		\$	
0060	00212		CL2 ASPH BASE 1.00D PG64-22	8,409.00	TON		\$	
0070	00214		CL3 ASPH BASE 1.00D PG64-22	48,812.00	TON		\$	
0080	00307		CL2 ASPH SURF 0.38B PG64-22	3,140.00	TON		\$	
0090	00388		CL3 ASPH SURF 0.38B PG64-22	8,013.00	TON		\$	
0100	02676		MOBILIZATION FOR MILL & TEXT	1.00	LS		\$	
0110	02677		ASPHALT PAVE MILLING & TEXTURING	1,675.00	TON		\$	

Section: 0002 - ROADWAY

LINE	BID CODE	ALT	DESCRIPTION	QUANTITY	UNIT	UNIT PRIC	FP	AMOUNT
0900	00001		DGA BASE	3,699.00	TON		\$	
0910	00212		CL2 ASPH BASE 1.00D PG64-22	1,728.00	TON		\$	
0920	00307		CL2 ASPH SURF 0.38B PG64-22	704.00	TON		\$	
0930	01002		PERFORATED PIPE-8 IN	500.00	LF		\$	
0940	01825		ISLAND CURB AND GUTTER	757.00	LF		\$	
0950	01982		DELINEATOR FOR GUARDRAIL MONO DIRECTIONAL WHITE	297.00	EACH		\$	
0960	01983		DELINEATOR FOR GUARDRAIL MONO DIRECTIONAL YELLOW	82.00	EACH		\$	
0970	01987		DELINEATOR FOR GUARDRAIL BI DIRECTIONAL WHITE	36.00	EACH		\$	
0980	02003		RELOCATE TEMP CONC BARRIER	1,900.00	LF		\$	
0990	02014		BARRICADE-TYPE III	6.00	EACH		\$	
1000	02091		REMOVE PAVEMENT	4,459.00	SQYD		\$	
1010	02159		TEMP DITCH	14,699.00	LF		\$	
1020	02160		CLEAN TEMP DITCH	7,354.00	LF		\$	
1030	02200		ROADWAY EXCAVATION	1,089,351.00	CUYD		\$	
1040	02242		WATER	5,568.00	MGAL		\$	
1050	02262		FENCE-WOVEN WIRE TYPE 1	28,932.00	LF		\$	
1060	02265		REMOVE FENCE	9,455.00	LF		\$	
1070	02351		GUARDRAIL-STEEL W BEAM-S FACE	17,364.30	LF		\$	
1080	02352		GUARDRAIL-STEEL W BEAM-D FACE	575.00	LF		\$	
1090	02360		GUARDRAIL TERMINAL SECTION NO 1	16.00	EACH		\$	
1100	02363		GUARDRAIL CONNECTOR TO BRIDGE END TY A	18.00	EACH		\$	
1110	02367		GUARDRAIL END TREATMENT TYPE 1	9.00	EACH		\$	
1120	02371		GUARDRAIL END TREATMENT TYPE 7	8.00	EACH		\$	
1130	02373		GUARDRAIL END TREATMENT TYPE 3	1.00	EACH		\$	
1140	02381		REMOVE GUARDRAIL	18,942.00	LF		\$	
1150	02387		GUARDRAIL CONNECTOR TO BRIDGE END TY A-1	8.00	EACH		\$	
1160	02391		GUARDRAIL END TREATMENT TYPE 4A	7.00	EACH		\$	
1170	02396		REMOVE GUARDRAIL END TREATMENT	3.00	EACH		\$	

PROPOSAL BID ITEMS

REVISED ADDENDUM #1: 12-2-16

161059

Page 2 of 9

Report Date 12/2/16

LINE	BID CODE	ALT	DESCRIPTION	QUANTITY	UNIT	UNIT PRIC	FP	AMOUNT
1180	02397		TEMP GUARDRAIL	2,475.50	LF		\$	
1190	02399		EXTRA LENGTH GUARDRAIL POST	688.00	EACH		\$	
1200	02429		RIGHT-OF-WAY MONUMENT TYPE 1	46.00	EACH		\$	
1210	02432		WITNESS POST	6.00	EACH		\$	
1220	02475		PLUG WATER WELL	1.00	EACH		\$	
1230	02488		CHANNEL LINING CLASS IV	12,775.00	CUYD		\$	
1240	02545		CLEARING AND GRUBBING 68 ACRES-MORGAN	1.00	LS		\$	
1250	02545		CLEARING AND GRUBBING 86 ACRES-WOLFE	1.00	LS		\$	
1260	02562		TEMPORARY SIGNS	912.00	SQFT		\$	
1270	02585		EDGE KEY	40.00	LF		\$	
1280	02596		FABRIC-GEOTEXTILE TYPE I	11,205.00	SQYD		\$	
1290	02599		FABRIC-GEOTEXTILE TYPE IV	222,709.00	SQYD		\$	
1300	02600		FABRIC GEOTEXTILE TY IV FOR PIPE	9,580.00	SQYD	\$2.00	\$	\$19,160.00
1310	02610		RETAINING WALL-GABION	49.00	CUYD		\$	
1320	02650		MAINTAIN & CONTROL TRAFFIC MORGAN	1.00	LS		\$	
1330	02650		MAINTAIN & CONTROL TRAFFIC WOLFE	1.00	LS		\$	
1340	02651		DIVERSIONS (BY-PASS DETOURS) WOLFE- KY-205	1.00	LS		\$	
1350	02651		DIVERSIONS (BY-PASS DETOURS) WOLFE- PHASE I	1.00	LS		\$	
1360	02651		DIVERSIONS (BY-PASS DETOURS) WOLFE- PHASE III	1.00	LS		\$	
1370	02651		DIVERSIONS (BY-PASS DETOURS) WOLFE- PHASE III KY-205	1.00	LS		\$	
1380	02651		DIVERSIONS (BY-PASS DETOURS) WOLFE- TEMP RAMP B	1.00	LS		\$	
1390	02655		CROSSOVER MORGAN-TEMP ALTERNATE EAST END TIE- IN	1.00	LS		\$	
1400	02655		CROSSOVER WOLFE- PHASE II	1.00	LS		\$	
1410	02655		CROSSOVER WOLFE- PHASE IV	1.00	LS		\$	
1420	02655		CROSSOVER WOLFE- TEMP RAMP C	1.00	LS		\$	
1430	02655		CROSSOVER WOLFE-PHASE III	1.00	LS		\$	
1440	02671		PORTABLE CHANGEABLE MESSAGE SIGN	2.00	EACH		\$	
1450	02690		SAFELoading	117.30	CUYD		\$	
1460	02696		SHOULDER RUMBLE STRIPS-SAWED	71,448.00	LF		\$	
1470	02701		TEMP SILT FENCE	14,699.00	LF		\$	
1480	02703		SILT TRAP TYPE A	157.00	EACH		\$	
1490	02704		SILT TRAP TYPE B	157.00	EACH		\$	
1500	02705		SILT TRAP TYPE C	157.00	EACH		\$	
1510	02706		CLEAN SILT TRAP TYPE A	157.00	EACH		\$	
1520	02707		CLEAN SILT TRAP TYPE B	157.00	EACH		\$	
1530	02708		CLEAN SILT TRAP TYPE C	157.00	EACH		\$	
1540	02726		STAKING MORGAN	1.00	LS		\$	

PROPOSAL BID ITEMS

161059

Report Date 12/2/16

LINE	BID CODE	ALT	DESCRIPTION	QUANTITY	UNIT	UNIT PRIC	FP	AMOUNT
1550	02726		STAKING WOLFE	1.00	LS		\$	
1560	02731		REMOVE STRUCTURE PARCEL 26(WELL HOUSE)	1.00	LS		\$	
1570	02731		REMOVE STRUCTURE WOLFE- KY 205 BRIDGE OVER STATE ROAD FORK	1.00	LS		\$	
1580	02731		REMOVE STRUCTURE WOLFE- MT PKWY BRIDGE OVER KY 205	1.00	LS		\$	
1590	02731		REMOVE STRUCTURE WOLFE- MT PKWY BRIDGE OVER RED RIVER	1.00	LS		\$	
1600	02898		RELOCATE CRASH CUSHION	2.00	EACH		\$	
1610	02929		CRASH CUSHION TYPE IX	2.00	EACH		\$	
1620	03171		CONCRETE BARRIER WALL TYPE 9T	6,720.00	LF		\$	
1630	04934		TEMP SIGNAL MULTI PHASE	1.00	EACH		\$	
1640	05950		EROSION CONTROL BLANKET	52,261.00	SQYD		\$	
1650	05952		TEMP MULCH	498,737.00	SQYD		\$	
1660	05953		TEMP SEEDING AND PROTECTION	374,055.00	SQYD		\$	
1670	05963		INITIAL FERTILIZER	13.20	TON		\$	
1680	05964		20-10-10 FERTILIZER	22.00	TON		\$	
1690	05985		SEEDING AND PROTECTION	533,627.00	SQYD		\$	
1700	05992		AGRICULTURAL LIMESTONE	131.20	TON		\$	
1710	06510		PAVE STRIPING-TEMP PAINT-4 IN	20,702.00	LF		\$	
1720	06511		PAVE STRIPING-TEMP PAINT-6 IN	114,360.00	LF		\$	
1730	06513		PAVE STRIPING-TEMP PAINT-12 IN	163.00	LF		\$	
1740	06531		PAVE STRIPING REMOVAL-6 IN	9,769.00	LF		\$	
1750	06533		PAVE STRIPING REMOVAL-12 IN	163.00	LF		\$	
1760	06586		PAVEMENT MARKER TY IVA-MY TEMP	134.00	EACH		\$	
1770	06588		PAVEMENT MARKER TY IVA-BY TEMP	452.00	EACH		\$	
1781	08104		CONCRETE-CLASS AA (ADDED: 12-2-16)	1.53	CUYD		\$	
1790	08901		CRASH CUSHION TY VI CLASS BT TL2	7.00	EACH		\$	
1800	08907		CRASH CUSHION TY VII CLASS B TL3	1.00	EACH		\$	
1810	10020NS		FUEL ADJUSTMENT	334,318.00	DOLL	\$1.00	\$	\$334,318.00
1820	10030NS		ASPHALT ADJUSTMENT	297,692.00	DOLL	\$1.00	\$	\$297,692.00
1830	20418ED		REMOVE & RELOCATE SIGNS	5.00	EACH		\$	
1840	20454NS835		TEMPORARY LIGHTING WOLFE	1.00	LS		\$	
1850	21289ED		LONGITUDINAL EDGE KEY	2,664.00	LF		\$	
1860	23274EN11F		TURF REINFORCEMENT MAT 1	2,231.00	SQYD		\$	
1870	24814EC		PIPELINE INSPECTION	4,033.00	LF		\$	

Section: 0003 - DRAINAGE

LINE	BID CODE	ALT	DESCRIPTION	QUANTITY	UNIT	UNIT PRIC	FP	AMOUNT
1880	00078		CRUSHED AGGREGATE SIZE NO 2	65.00	TON		\$	
1890	00441		ENTRANCE PIPE-18 IN	35.00	LF		\$	
1900	00443		ENTRANCE PIPE-24 IN	214.00	LF		\$	
1910	00445		ENTRANCE PIPE-30 IN	30.00	LF		\$	
1920	00464		CULVERT PIPE-24 IN	115.00	LF		\$	

PROPOSAL BID ITEMS

REVISED ADDENDUM #1: 12-2-16

161059

Page 4 of 9

Report Date 12/2/16

LINE	BID CODE	ALT	DESCRIPTION	QUANTITY	UNIT	UNIT PRIC	FP	AMOUNT
1930	00465		CULVERT PIPE-27 IN	129.00	LF		\$	
1940	00468		CULVERT PIPE-36 IN	906.00	LF		\$	
1950	00469		CULVERT PIPE-42 IN	53.00	LF		\$	
1960	00470		CULVERT PIPE-48 IN	87.00	LF		\$	
1970	00471		CULVERT PIPE-54 IN	101.00	LF		\$	
1980	00522		STORM SEWER PIPE-18 IN	1,814.00	LF		\$	
1990	00524		STORM SEWER PIPE-24 IN	739.00	LF		\$	
2000	00526		STORM SEWER PIPE-30 IN	547.00	LF		\$	
2010	01000		PERFORATED PIPE-4 IN	8,386.00	LF		\$	
2020	01010		NON-PERFORATED PIPE-4 IN	1,155.00	LF		\$	
2030	01020		PERF PIPE HEADWALL TY 1-4 IN	22.00	EACH		\$	
2040	01024		PERF PIPE HEADWALL TY 2-4 IN	2.00	EACH		\$	
2050	01028		PERF PIPE HEADWALL TY 3-4 IN	7.00	EACH		\$	
2060	01032		PERF PIPE HEADWALL TY 4-4 IN	34.00	EACH		\$	
2070	01204		PIPE CULVERT HEADWALL-18 IN	5.00	EACH		\$	
2080	01204		PIPE CULVERT HEADWALL-18 IN	9.00	EACH		\$	
2090	01208		PIPE CULVERT HEADWALL-24 IN	2.00	EACH		\$	
2100	01208		PIPE CULVERT HEADWALL-24 IN	5.00	EACH		\$	
2110	01210		PIPE CULVERT HEADWALL-30 IN	3.00	EACH		\$	
2120	01210		PIPE CULVERT HEADWALL-30 IN	1.00	EACH		\$	
2130	01212		PIPE CULVERT HEADWALL-36 IN	9.00	EACH		\$	
2140	01214		PIPE CULVERT HEADWALL-42 IN	1.00	EACH		\$	
2150	01216		PIPE CULVERT HEADWALL-48 IN	2.00	EACH		\$	
2160	01223		PIPE CULVERT HEADWALL-27 IN	2.00	EACH		\$	
2170	01450		S & F BOX INLET-OUTLET-18 IN	3.00	EACH		\$	
2180	01453		S & F BOX INLET-OUTLET-36 IN	2.00	EACH		\$	
2190	01480		CURB BOX INLET TYPE B	9.00	EACH		\$	
2200	01490		DROP BOX INLET TYPE 1	9.00	EACH		\$	
2210	01493		DROP BOX INLET TYPE 2	5.00	EACH		\$	
2220	01505		DROP BOX INLET TYPE 5B	10.00	EACH		\$	
2230	01506		DROP BOX INLET TYPE 5B MOD	2.00	EACH		\$	
2240	01538		DROP BOX INLET TYPE 7	1.00	EACH		\$	
2250	01541		DROP BOX INLET TYPE 10	1.00	EACH		\$	
2260	01642		JUNCTION BOX-18 IN	3.00	EACH		\$	
2270	01767		MANHOLE TYPE C	1.00	EACH		\$	
2280	24026EC		PIPE CULVERT HEADWALL-54 IN	2.00	EACH		\$	

Section: 0004 - BRIDGE-CULVERT - 27086

LINE	BID CODE	ALT	DESCRIPTION	QUANTITY	UNIT	UNIT PRIC	FP	AMOUNT
2290	02223		GRANULAR EMBANKMENT	149.00	CUYD		\$	
2300	02403		REMOVE CONCRETE MASONRY	3.00	CUYD		\$	
2310	08002		STRUCTURE EXCAV-SOLID ROCK	6.00	CUYD		\$	
2320	08003		FOUNDATION PREPARATION MORGAN	1.00	LS		\$	
2330	08100		CONCRETE-CLASS A	207.00	CUYD		\$	
2340	08150		STEEL REINFORCEMENT	12,349.00	LB		\$	

PROPOSAL BID ITEMS

REVISED ADDENDUM #1: 12-2-16

161059

Page 5 of 9

Report Date 12/2/16

Section: 0005 - BRIDGE - 27077

LINE	BID CODE	ALT	DESCRIPTION	QUANTITY	UNIT	UNIT PRIC	FP	AMOUNT
2350	02231		STRUCTURE GRANULAR BACKFILL	482.00	CUYD		\$	
2360	02998		MASONRY COATING	3,293.00	SQYD		\$	
2370	03299		ARMORED EDGE FOR CONCRETE	164.00	LF		\$	
2380	08001		STRUCTURE EXCAVATION-COMMON	402.00	CUYD		\$	
2390	08020		CRUSHED AGGREGATE SLOPE PROT	504.00	TON		\$	
2400	08033		TEST PILES	418.00	LF		\$	
2410	08046		PILES-STEEL HP12X53	4,137.00	LF		\$	
2420	08094		PILE POINTS-12 IN	136.00	EACH		\$	
2430	08100		CONCRETE-CLASS A	639.50	CUYD		\$	
2440	08104		CONCRETE-CLASS AA	819.70	CUYD		\$	
2450	08150		STEEL REINFORCEMENT	98,090.00	LB		\$	
2460	08151		STEEL REINFORCEMENT-EPOXY COATED	196,855.00	LB		\$	
2470	21532ED		RAIL SYSTEM TYPE III	973.00	LF		\$	
2480	24098EC		PPC I-BEAM TYPE HN 66-49	2,393.50	LF		\$	

Section: 0006 - BRIDGE - 27079

LINE	BID CODE	ALT	DESCRIPTION	QUANTITY	UNIT	UNIT PRIC	FP	AMOUNT
2490	02231		STRUCTURE GRANULAR BACKFILL	662.00	CUYD		\$	
2500	02998		MASONRY COATING	4,195.00	SQYD		\$	
2510	03299		ARMORED EDGE FOR CONCRETE	213.00	LF		\$	
2520	08001		STRUCTURE EXCAVATION-COMMON	131.00	CUYD		\$	
2530	08019		CYCLOPEAN STONE RIP RAP	2,358.00	TON		\$	
2540	08033		TEST PILES	184.00	LF		\$	
2550	08039		PRE-DRILLING FOR PILES	67.00	LF		\$	
2560	08046		PILES-STEEL HP12X53	780.00	LF		\$	
2570	08094		PILE POINTS-12 IN	28.00	EACH		\$	
2580	08100		CONCRETE-CLASS A	678.50	CUYD		\$	
2590	08104		CONCRETE-CLASS AA	1,110.00	CUYD		\$	
2600	08150		STEEL REINFORCEMENT	93,448.00	LB		\$	
2610	08151		STEEL REINFORCEMENT-EPOXY COATED	330,263.00	LB		\$	
2620	20745ED		ROCK SOUNDINGS	248.00	LF		\$	
2630	20746ED		ROCK CORINGS	276.00	LF		\$	
2640	21420ED		DRILLED SHAFT-66 IN (COMMON)	248.00	LF		\$	
2650	21421ED		DRILLED SHAFT-60 IN (SOLID ROCK)	96.00	LF		\$	
2660	21532ED		RAIL SYSTEM TYPE III	1,238.00	LF		\$	
2670	24098EC		PPC I-BEAM TYPE HN 66-49	3,033.80	LF		\$	

Section: 0007 - BRIDGE - 27081

LINE	BID CODE	ALT	DESCRIPTION	QUANTITY	UNIT	UNIT PRIC	FP	AMOUNT
2680	02231		STRUCTURE GRANULAR BACKFILL	140.00	CUYD		\$	
2690	02998		MASONRY COATING	1,030.00	SQYD		\$	
2700	03299		ARMORED EDGE FOR CONCRETE	58.00	LF		\$	
2710	08001		STRUCTURE EXCAVATION-COMMON	150.00	CUYD		\$	
2720	08002		STRUCTURE EXCAV-SOLID ROCK	4.00	CUYD		\$	

PROPOSAL BID ITEMS

REVISED ADDENDUM #1: 12-2-16

161059

Page 6 of 9

Report Date 12/2/16

LINE	BID CODE	ALT	DESCRIPTION	QUANTITY	UNIT	UNIT PRIC	FP	AMOUNT
2730	08019		CYCLOPEAN STONE RIP RAP	1,005.00	TON		\$	
2740	08033		TEST PILES	75.00	LF		\$	
2750	08039		PRE-DRILLING FOR PILES	60.00	LF		\$	
2760	08046		PILES-STEEL HP12X53	228.00	LF		\$	
2770	08094		PILE POINTS-12 IN	12.00	EACH		\$	
2780	08100		CONCRETE-CLASS A	134.20	CUYD		\$	
2790	08104		CONCRETE-CLASS AA	249.90	CUYD		\$	
2800	08150		STEEL REINFORCEMENT	17,979.00	LB		\$	
2810	08151		STEEL REINFORCEMENT-EPOXY COATED	57,338.00	LB		\$	
2820	08634		PRECAST PC I BEAM TYPE 4	922.50	LF		\$	
2830	20745ED		ROCK SOUNDINGS	87.00	LF		\$	
2840	20746ED		ROCK CORINGS	92.00	LF		\$	
2850	21420ED		DRILLED SHAFT-66 IN (COMMON)	87.00	LF		\$	
2860	21421ED		DRILLED SHAFT-60 IN (SOLID ROCK)	32.00	LF		\$	
2870	21532ED		RAIL SYSTEM TYPE III	470.00	LF		\$	

Section: 0008 - BRIDGE - 27082

LINE	BID CODE	ALT	DESCRIPTION	QUANTITY	UNIT	UNIT PRIC	FP	AMOUNT
2880	02231		STRUCTURE GRANULAR BACKFILL	146.00	CUYD		\$	
2890	02998		MASONRY COATING	783.00	SQYD		\$	
2900	03299		ARMORED EDGE FOR CONCRETE	61.00	LF		\$	
2910	08001		STRUCTURE EXCAVATION-COMMON	214.00	CUYD		\$	
2920	08019		CYCLOPEAN STONE RIP RAP	1,438.00	TON		\$	
2930	08033		TEST PILES	89.00	LF		\$	
2940	08046		PILES-STEEL HP12X53	293.00	LF		\$	
2950	08094		PILE POINTS-12 IN	12.00	EACH		\$	
2960	08100		CONCRETE-CLASS A	133.60	CUYD		\$	
2970	08104		CONCRETE-CLASS AA	197.30	CUYD		\$	
2980	08150		STEEL REINFORCEMENT	14,904.00	LB		\$	
2990	08151		STEEL REINFORCEMENT-EPOXY COATED	48,351.00	LB		\$	
3000	08634		PRECAST PC I BEAM TYPE 4	642.50	LF		\$	
3010	20745ED		ROCK SOUNDINGS	75.00	LF		\$	
3020	20746ED		ROCK CORINGS	92.00	LF		\$	
3030	21420ED		DRILLED SHAFT-66 IN (COMMON)	75.00	LF		\$	
3040	21421ED		DRILLED SHAFT-60 IN (SOLID ROCK)	32.00	LF		\$	
3050	21532ED		RAIL SYSTEM TYPE III	331.00	LF		\$	
3060	23813EC		DECK DRAIN	5.00	EACH		\$	

Section: 0009 - BRIDGE - 27083

LINE	BID CODE	ALT	DESCRIPTION	QUANTITY	UNIT	UNIT PRIC	FP	AMOUNT
3070	02231		STRUCTURE GRANULAR BACKFILL	277.00	CUYD		\$	
3080	02998		MASONRY COATING	417.00	SQYD		\$	
3090	03299		ARMORED EDGE FOR CONCRETE	111.00	LF		\$	
3100	08019		CYCLOPEAN STONE RIP RAP	849.00	TON		\$	
3110	08033		TEST PILES	93.00	LF		\$	
3120	08046		PILES-STEEL HP12X53	535.00	LF		\$	

PROPOSAL BID ITEMS

161059

Page 7 of 9

Report Date 12/2/16

LINE	BID CODE	ALT	DESCRIPTION	QUANTITY	UNIT	UNIT PRIC	FP	AMOUNT
3130	08094		PILE POINTS-12 IN	18.00	EACH		\$	
3140	08100		CONCRETE-CLASS A	69.10	CUYD		\$	
3150	08104		CONCRETE-CLASS AA	215.00	CUYD		\$	
3160	08151		STEEL REINFORCEMENT-EPOXY COATED	42,336.00	LB		\$	
3170	08633		PRECAST PC I BEAM TYPE 3	1,026.50	LF		\$	
3180	21532ED		RAIL SYSTEM TYPE III	211.00	LF		\$	

Section: 0010 - BRIDGE-CULVERT - 27084

LINE	BID CODE	ALT	DESCRIPTION	QUANTITY	UNIT	UNIT PRIC	FP	AMOUNT
0120	02223		GRANULAR EMBANKMENT	302.00	CUYD		\$	
0130	02403		REMOVE CONCRETE MASONRY	28.00	CUYD		\$	
0140	08003		FOUNDATION PREPARATION	1.00	LS		\$	
0150	08100		CONCRETE-CLASS A	398.00	CUYD		\$	
0160	08150		STEEL REINFORCEMENT	45,590.00	LB		\$	

Section: 0011 - BRIDGE-CULVERT - 27085

LINE	BID CODE	ALT	DESCRIPTION	QUANTITY	UNIT	UNIT PRIC	FP	AMOUNT
0170	02403		REMOVE CONCRETE MASONRY	6.00	CUYD		\$	
0180	08002		STRUCTURE EXCAV-SOLID ROCK	9.00	CUYD		\$	
0190	08003		FOUNDATION PREPARATION	1.00	LS		\$	
0200	08100		CONCRETE-CLASS A	47.70	CUYD		\$	
0210	08150		STEEL REINFORCEMENT	3,228.00	LB		\$	

Section: 0012 - SIGNING

LINE	BID CODE	ALT	DESCRIPTION	QUANTITY	UNIT	UNIT PRIC	FP	AMOUNT
0220	06401		FLEXIBLE DELINEATOR POST-M/W	207.00	EACH		\$	
0230	06403		FLEXIBLE DELINEATOR POST-B/W	74.00	EACH		\$	
0240	06404		FLEXIBLE DELINEATOR POST-M/Y	87.00	EACH		\$	
0250	06405		SBM ALUMINUM PANEL SIGNS	936.50	SQFT		\$	
0260	06407		SBM ALUM SHEET SIGNS .125 IN	616.10	SQFT		\$	
0270	06410		STEEL POST TYPE 1	1,092.00	LF		\$	
0280	06412		STEEL POST MILE MARKERS	6.00	EACH		\$	
0290	06441		GMSS GALV STEEL TYPE C	6,088.50	LB		\$	
0300	06490		CLASS A CONCRETE FOR SIGNS	29.78	CUYD		\$	
0310	06491		STEEL REINFORCEMENT FOR SIGNS	880.00	LB		\$	
0320	06514		PAVE STRIPING-PERM PAINT-4 IN	12,720.00	LF		\$	
0330	06515		PAVE STRIPING-PERM PAINT-6 IN	79,622.00	LF		\$	
0340	06517		PAVE STRIPING-PERM PAINT-12 IN	2,258.00	LF		\$	
0350	06574		PAVE MARKING-THERMO CURV ARROW	8.00	EACH		\$	
0360	20205EC		PAVE MARK STOP BAR-24 IN PAINT	60.00	LF		\$	
0370	20418ED		REMOVE & RELOCATE SIGNS	4.00	EACH		\$	
0380	21596ND		GMSS TYPE D	57.00	EACH		\$	
0390	24489EC		INLAID PAVEMENT MARKER	729.00	EACH		\$	

PROPOSAL BID ITEMS

161059

Report Date 12/2/16

LINE	BID CODE	ALT	DESCRIPTION	QUANTITY	UNIT	UNIT PRIC	FP	AMOUNT
0400	24631EC		BARCODE SIGN INVENTORY	93.00	EACH		\$	
0410	30012		MILE MARKER	6.00	EACH		\$	

Section: 0013 - LIGHTING

LINE	BID CODE	ALT	DESCRIPTION	QUANTITY	UNIT	UNIT PRIC	FP	AMOUNT
0420	04701		POLE 40 FT MTG HT	11.00	EACH		\$	
0430	04724		BRACKET 12 FT	11.00	EACH		\$	
0440	04740		POLE BASE	11.00	EACH		\$	
0450	04750		TRANSFORMER BASE	11.00	EACH		\$	
0460	04761		LIGHTING CONTROL EQUIPMENT	1.00	EACH		\$	
0470	04780		FUSED CONNECTOR KIT	22.00	EACH		\$	
0480	04797		CONDUIT-3 IN	745.00	LF		\$	
0490	04820		TRENCHING AND BACKFILLING	1,965.00	LF		\$	
0500	04832		WIRE-NO. 12	1,320.00	LF		\$	
0510	04860		CABLE-NO. 8/3C DUCTED	1,965.00	LF		\$	
0520	20391NS835		ELECTRICAL JUNCTION BOX TYPE A	14.00	EACH		\$	
0530	24589ED		LED LUMINAIRE	11.00	EACH		\$	

Section: 0014 - WATERLINE-MORGAN COUNTY

LINE	BID CODE	ALT	DESCRIPTION	QUANTITY	UNIT	UNIT PRIC	FP	AMOUNT
0540	14001		W AIR RELEASE VALVE 3/4 INCH	2.00	EACH		\$	
0550	14003		W CAP EXISTING MAIN	7.00	EACH		\$	
0560	14003		W CAP EXISTING MAIN 3 IN CUT AND CAP	1.00	EACH		\$	
0570	14004		W DIRECTIONAL BORE	240.00	LF		\$	
0580	14004		W DIRECTIONAL BORE 8 IN HDPE CASING PIPE	325.00	LF		\$	
0590	14004		W DIRECTIONAL BORE CREEK CROSSING	40.00	LF		\$	
0600	14008		W ENCASEMENT STEEL BORED RANGE 3	889.00	LF		\$	
0610	14008		W ENCASEMENT STEEL BORED RANGE 3 10 IN STEEL	95.00	LF		\$	
0620	14013		W ENCASEMENT STEEL OPEN CUT RANGE 2 8 IN STEEL	310.00	LF		\$	
0630	14014		W ENCASEMENT STEEL OPEN CUT RANGE 3	60.00	LF		\$	
0640	14014		W ENCASEMENT STEEL OPEN CUT RANGE 3 10 IN STEEL	20.00	LF		\$	
0650	14019		W FIRE HYDRANT ASSEMBLY 3 INCH NOZZLE BLOWOFF	1.00	EACH		\$	
0660	14022		W FLUSH HYDRANT ASSEMBLY	3.00	EACH		\$	
0670	14023		W FLUSHING ASSEMBLY 3 INCH BLOWOFF	1.00	EACH		\$	
0680	14028		W METER 3/4 INCH	3.00	EACH		\$	
0690	14029		W METER ADJUST RECONNECT TO EXIST SERVICE	2.00	EACH		\$	
0700	14030		W METER RELOCATE	2.00	EACH		\$	
0710	14036		W PIPE DUCTILE IRON 06 INCH	400.00	LF		\$	
0720	14057		W PIPE PVC 03 INCH	912.00	LF		\$	

PROPOSAL BID ITEMS

REVISED ADDENDUM #1: 12-2-16

161059

Page 9 of 9

Report Date 12/2/16

LINE	BID CODE	ALT	DESCRIPTION	QUANTITY	UNIT	UNIT PRIC	FP	AMOUNT
0730	14057		W PIPE PVC 03 INCH SDR - 17	2,930.00	LF		\$	
0740	14059		W PIPE PVC 06 INCH	5,348.00	LF		\$	
0750	14059		W PIPE PVC 06 INCH SDR - 17	2,640.00	LF		\$	
0760	14067		W PIPE POLYETHYLENE/PLASTIC 03 INCH HDPE DR 9	440.00	LF		\$	
0770	14092		W TIE-IN 03 INCH	1.00	EACH		\$	
0780	14094		W TIE-IN 06 INCH	6.00	EACH		\$	
0790	14101		W TIE-IN SPECIAL VARIOUS TYPES	3.00	EACH		\$	
0800	14103		W VALVE 03 INCH	1.00	EACH		\$	
0810	14105		W VALVE 06 INCH	11.00	EACH		\$	
0820	14131		W METER SPECIAL	1.00	EACH		\$	
0830	14144		W LINE MARKER	6.00	EACH		\$	
0840	14571		W SERV PE/PLST SHORT SIDE 3/4 IN INST	1.00	EACH		\$	
0850	21233ED		ASPHALT PAVING REPLACEMENT 140 LF	140.00	LF		\$	
0860	24441EC		GRAVEL REPLACEMENT DRIVEWAYS 40 LF	40.00	LF		\$	

Section: 0015 - TRAINEES

LINE	BID CODE	ALT	DESCRIPTION	QUANTITY	UNIT	UNIT PRIC	FP	AMOUNT
0870	02742		TRAINEE PAYMENT REIMBURSEMENT 1 GROUP 2, 3 OR 4 OPERATOR	1,400.00	HOUR		\$	

Section: 0016 - DEMOBILIZATION &/OR MOBILIZATION

LINE	BID CODE	ALT	DESCRIPTION	QUANTITY	UNIT	UNIT PRIC	FP	AMOUNT
0880	02568		MOBILIZATION	1.00	LS		\$	
0890	02569		DEMOBILIZATION	1.00	LS		\$	